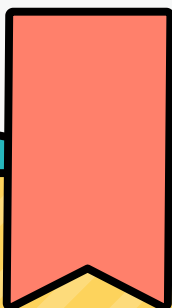


Kindergarten, Elementary Secondary Education Statistics Survey Guideline



Kindergarten, Elementary Secondary Education Statistics Survey Guideline

Table of Contents

I

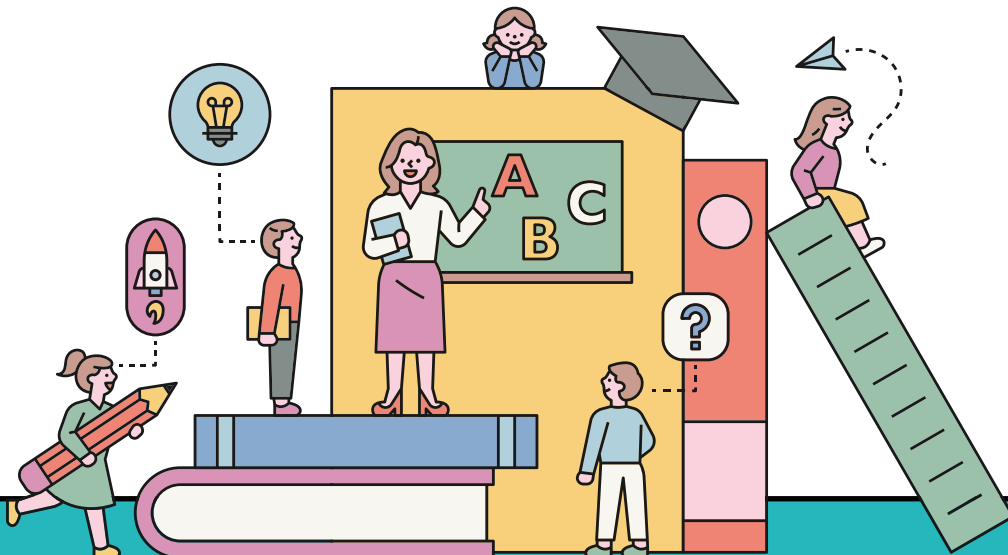
Common School Survey Items

1. School Overview	08
1) School Name and Name of the Principal	08
2) Establishment Status	08
3) School Address and School Website Address	10
4) General Status of the School	10
5) Kindergarten Environment	11
6) Preparer Information	12
7) Items to be Entered by the Office of Education of the City or Do	12
2. School Teachers	15
2-1. Teacher Status	15
1) Basic Information, Salary Grade, Position	15
2) Short-Term Teaching Staff, Teachers with Positions, Native Speaker Teachers	16
3) Changes to Teachers	17
4) Experiences	18
5) Education and Method of Acquiring a Teacher Certification at First Appointment (at the current school level)	19
6) Qualifications	19
7) (Semester) Weekly Lesson Hours	20
8) Class Schedule Teacher Assignment, Subject Specific Teachers, Invitation, Homeroom Teachers and Work Hours	21
2-2. Completion of Training	23
3. School Facility Related	24
3-1. School Lot Status	24
3-2. Building Status	25
3-3. Status by Actual Usage	28
3-4. Dormitory Status	31
3-5. Cooling and Heating Status	31
3-6. Energy Usage	33
3-7. Computer Ownership Status	34
3-8. School Library Status	36
4. Employee Status	38

II

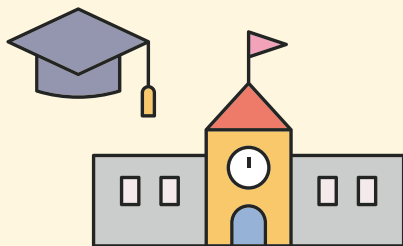
Survey Items by School System

1. Kindergarten	42
1-1. No. of Students by Age and Class Status	42
1-2. Status of Persons Eligible for Special Education	44
1-3. No. of New Students and No. of Graduates	45
1-4. Employee Status	45
1-5. Multi-Cultural Students Status	46
2. Elementary, Middle and High School	47
2-1. Student Status by Class and Age	47
2-2. Authorized Class Status	50
2-3. Persons Subject to Special Education	51
2-4. Admissions and Non-Enrollment Status	53
1) Admissions Status	53
2) Children Not Attending School (Elementary Only)	56
2-5. Students Suspending School and Status of Student Changes	57
1) Status on the Students Suspending School	57
2) Student Change Status	59
2-6. Status of Students on Leave of Absence (High School Only)	60
2-7. Post Graduation Status	61
2-8. Enrollee and Graduate Status by Age (High School Only)	64
2-9. Study Abroad Status	65
2-10. Returning Status	66
2-11. Multi-Cultural Student Status	66
2-12. Foreign Student Status (High School Only)	67





Kindergarten, Elementary Secondary
Education Statistics Survey Guideline



01

Common School Survey Items



I Common School Survey Items

01 School Overview

1) School Name and Name of the Principal

(1) [School (Kindergarten) Name]: Official school name approved by the Ministry of Education and office of education

(2) [Name of the Principal (Head of Kindergarten)]: The name of the principal (head of kindergarten) as of the survey record date

2) Establishment Status

Establishment Status	Private Private	A Kindergarten Founding Entity		①Private (Individual) ②Private (Corporation)			
		B Religious		①N/A ②Catholic ③Protestant ④Buddhism ⑤Confucian ⑥Others			
		C	Type of Corporation	Primary/Middle/High	②School Foundation		
			Type of Corporation	Kindergarten/Special/Other Type of School	①N/A	②School Foundation	③Corporation (Educational/Scholarship)
					④Corporation (Academic)	⑤Corporation (Reformation/Religious)	⑥Corporation (Others)
					⑦Foundation (Educational/Scholarship)	⑧Foundation (Academic)	⑨Foundation (Reformation/Religious)
					⑩Foundation (Others)	⑪Social Welfare Corporation	
		Corporate Name	(Type)	Corporate Registration No.	(Type)		
		Incorporation Date	(Type)	Founder	(Type)		
		Name of the Chief Director	(Type)				
D First School (Kindergarten) Opening Date		(Type)					

(1) ㉠ Kindergarten Founding Entity: Private kindergartens select either private (individual) or private (corporation) as the founding entity
 - Private kindergartens managed by the military unit are 'Private (Individual)'

(2) ㉢ Religion: Select the religion for private schools founded based on a religion

(3) ㉣ Corporation: Survey only private schools and kindergartens, and type of corporation, corporate name, incorporation date, etc.

- Provided, not applicable to private kindergartens whose founding entity is private (individual)

① Type of Corporation: choose from N/A, school foundation, corporation, foundation and social welfare corporation
 - Under Articles 2 and 3 of the Private School Act, private elementary, middle and high schools can only select 'school foundation,' select the concerned corporation for private kindergartens, special schools and other type of schools.

② Corporate Name: Authorized official name of the corporation

③ Incorporation Date: Authorized incorporation date

④ Corporate Registration No.: Corporate registration number (13 digits) of private (corporation) kindergartens and private schools

⑤ Founder and Name of the Chief Director: Name of the founder when the corporation is authorized and the name of the current chief director

(4) ㉤ First School (Kindergarten) Opening Date: The first day of school (kindergarten) for the very first semester after obtaining authorization from the office of education, not the school (kindergarten) foundation date or incorporation date

- Incorporation Date: Authorized foundation date / Foundation Date: Date to celebrate the opening of the school

3) School Address and School Website Address

School Address	Road Name Address	
	Legal Town	
School Website Address		(Type)

(1) [School Address]

① Road Name Address: Road name address registered in NICE

② Legal Town (Dong): Name of Town (Dong) used in land register, cadastral map, parcel address, etc.

(2) [School Website Address]: School website address (including cafe, blog, etc.)

(**Example** : <https://school.kedi.re.kr>)

4) General Status of the School

General Status of the School	Ⓐ Day or Night	Middle/ High/ Special/ Others	①Day ②Night ③Day/Night
	Ⓑ Girls or Boys	Middle/ High/ Special/ Others	①Boys ②Girls ③Co-ed
	Ⓒ Publicly Recruited Principal	Common (Excluding Kindergarten)	①N/A ②Invitational ③Inside ④Open-type
	Ⓓ Special School – Disability Areas	Special Schools	①School for the visually impaired ② School for the hearing impaired ③ School for the intellectually disabled ④ School for the physically disabled ⑤ School for the emotionally disabled

(1) [Ⓐ Day or Night Classification]: Select from day, night or day/night

(2) [Ⓑ Girls or Boys Classification]: Select from boys, girls or co-ed (Deactivate for kindergarten and elementary school with 'N/A')

(3) [Ⓒ Publicly Recruited Principal]: Select from 'N/A, invitational, inside and open-type'

- Deactivate for kindergarten and elementary branch principals with 'N/A'

① Invitational: Public recruitment among people with a teacher certification from a general school

② Inside: Conduct public recruitment among people with a principal certification or people without a principal certification (educational officials and teachers from private schools with more than 15 years of teaching experience) from autonomous schools or autonomous public high schools

③ Open-Type: Conduct public recruitment among people with a principal certification or people without a principal certification (person with 3 or more year of experience at institutions or organizations related to the curriculum of the concerned schools) from specialized, special-purpose or arts and sports middle and high schools designated as autonomous schools

(4) [Ⓓ Special School – Disability Areas]: Only special schools are applicable and select according to the 'disability areas' at the time of school authorization

- Provided, special schools with several authorized disability areas, select the disability area with the most number of students

5) Kindergarten Environment

Kindergarten Environment	Ⓐ Ownership Type	① Own ② Lease ③ Government Owned ④ Shared
	Ⓑ Availability of Gym/ Playground (Can make multiple selections)	① Indoor ② Outdoor ③ Nearby ④ None
	Ⓒ After-school Program (Can make multiple selections)	① Standard ② Early-Morning Care ③ Evening-Care ④ All-day Care ⑤ Non

(1) [(A)Ownership Type]: Only survey the kindergartens and select among own, lease, government owned and shared

① Own: Owned by the kindergarten

- Kindergartens located at institutions, such as religious institutions or universities, etc., should select 'own'

② Lease: Facilities leased by paying a fixed amount as rent

- Kindergartens established by social coops (example: parent coop kindergartens) should select 'lease'

④ Shared: Owned by local governments

- Kindergartens sharing elementary facilities or BTL buildings should enter 'shared'

(2) [(B)Availability of Gym/ Playground]: Only survey the kindergartens and select among indoor, outdoor, nearby or non (Can make multiple selections)

- Includes other sports facilities, such as an auditorium, pool, recreational room, multi-purpose room, etc.

- Kindergartens attached to elementary school should enter by including 'outdoor' when using the elementary school facilities

① Indoor: Gym/playground installed inside the kindergarten building (includes courtyard within the building)

- Indoor: installed at a room (or other similar space) inside the kindergarten

- Courtyard within the building: using an outdoor space within the middle of the kindergarten

※ Space directly in contact with the outside air among the space within the building (veranda, mid-floor rooftop, etc.)

② Outdoor: Outdoor gym/playground installed outside the kindergarten building (within the owned site)

- Enter 'outdoor' if there is no playground but space for an outdoor play

③ Nearby: Nearby gym/playground authorized to use, outside the kindergarten building or site approved by the relevant authorities (Refer to the Written Consent on Property Use)

(3) [(C)After-School Program]: Select when operating after-school programs authorized by the office of education (standard, early-morning care, evening care, all-day care) (Can make multiple selections)

- After-school program: Other educational activities and care activities conducted after the regular educational program (Nuri program)

① Standard: After-school program operating after the regular educational program according to the kindergarten after-school program minimum operating standards of the office of education

② Early-morning care: Care program managed from early-morning until the regular educational program (includes both the office of education designated and kindergarten managed programs)

③ Evening care: Care program managed after the standard program (includes both the office of education designated and kindergarten managed programs)

④ All-day care: Care program that includes both the early-morning and evening care programs (Early-morning care + Standard + Evening care) (includes both the office of education designated and kindergarten managed programs)

⑤ None: When after-school programs are not operating (only the regular educational programs (Nuri program) are operating)

6) Preparer Information

(1) [Telephone]: Enter the telephone number of the educational statistics manager

- Enter the school main number or the administrative office number when individual phone numbers are not available. Do not enter the mobile telephone number of the manager

(2) [Fax Number]: Enter the main fax number of the school

(3) [Position (Rank)/ Name of the Manager]: Enter the position (rank) and name of the educational statistics manager, such as the administrative, office manager, teacher, etc.

7) Items to be Entered by the Office of Education of a City or Do

Establishment Status	(A)* Foundation Type	Elementary/ Middle/ High/ Special/ Others	① Stand-alone ② School Attached ③ School Annexed
		Kindergarten	National/ Public
			Private
School General Status	(B)* Operating Status	Common	① Newly Established ② Existing ③ Closed ④ Temporary Closure
	(C)* School Detailed Type	Elementary/ High Skills/ High Public	① N/A
		Middle	① N/A ② Specialized (International) ③ Specialized (Arts) ④ Specialized (Sports) ⑤ Specialized (Alternative) ⑥ Specialized (Others)
		High School	① N/A ⑦ Gifted School ⑧ Alternative School ⑨ General High School (Vocational) ⑩ Meister High
		Miscellaneous Schools	① N/A ⑧ Alternative School
	(D)* Integrated Schools	Common (Excluding Kindergarten)	① N/A ② Elementary+Middle+High ③ Elementary+Middle ④ Middle+High
	(E)* Public Recruitment of Principal	Common (Excluding Kindergarten)	① N/A ② Invitational ③ Inside ④ Open-Type
	(F)* High School Type	High School	① General High ② Special Purpose High ③ Specialized High (Vocational) ④ Specialized (Alternative) ⑤ Autonomous High
(G)* High Admissions Criteria Type	General High, Autonomous High (Public)	① Standardized ② Non-Standardized	
Changes	(H)* Change Classification	Common	① N/A ② Affiliation Change ③ Affiliation and School Name Change ④ Integration ⑤ Integration and School Name Change ⑥ School Name Change ⑦ Promoted to Main School and School Name Change ⑧ Demoted to Branch School and School Name Change

Changes	①* School Name Before/After the Change	Common	(Type)
	②* School Level Before/After the Change		①N/A ②Kindergarten ③Elementary School ④Middle School ⑤Misc. School ⑥General High School ⑦Specialized High School ⑧Special-Purpose High School ⑨Autonomous High School ⑩Special School

** indicates items to be entered by the office of education and is deactivated for the school managers

(1) [(A)*Foundation Type]: Foundation type should be entered by all schools, and select among stand-alone, school attached and school annexed

- Private kindergartens should select 'N/A'

(2) [(B)*Operating Status]

- Newly Established: schools (kindergartens) newly established between April 2, 2020~ April 1, 2021
- Existing: Schools (kindergartens) operating as of April 1, 2021
- Closed: Schools (kindergartens) closing down during the period of April 2, 2020~ April 1, 2021
- Temporary Closure: Schools (kindergartens) closed as of April 1, 2021

(3) [(C)*School Detailed Type]: Select according to the school type

- Specialized Middle School: Specialized (International), Specialized (Arts), Specialized (Sports), Specialized (Alternative), Specialized (Others)
- Gifted Schools: Seoul Science High School, Gyeonggi Science High School for the Gifted, Korea Science Academy, Daegu Science High School, Daejeon Science High School for the Gifted, Gwangju Science Academy for the Gifted, Sejong Academy of Science and Arts, Incheon Academy of Science and Arts
- Alternative Schools: Alternative Education (Specialized High Schools), Alternative Education (Miscellaneous Schools)
- General High School (Vocational): Classified as a general high school and has both general classes and vocational classes
- Meister High School: High school operating curriculum customized to fit the needs of the industry
- ※ Relevant Laws: Article 105 of the Enforcement Decree of the Elementary and Secondary Education Act

(4) [(D)*Integrated Schools]: Select from 'N/A, Elementary+Middle+High, Elementary+Middle, Middle+High'

- Kindergartens are deactivated with 'N/A'

(5) [(E)*Public Recruitment of Principals]: Public recruitment of principals

(6) [(F)*High School Type]: Only high schools are applicable, and select one from general high, special-purpose high, specialized high (vocational), specialized high (alternative) and autonomous high

- General High: High schools providing general education on various areas, not a specific area
- Special-Purpose High: High schools providing professional education on a specific area
- Specialized High (Vocational): High schools specializing in job training for the purpose of educating talents in specific areas
- Specialized High (Alternative): High schools specializing in alternative education conducting experience-centered education

- Autonomous High: High schools that can provide education and schooling autonomously

(7) [G]*High School Admissions Criteria Type: Only general high schools and autonomous high schools (public) are applicable and select from standardized and non-standardized

- Deactivated with 'N/A' for autonomous high (private), special-purpose high and specialized high schools

(8) [H]*Change Classification: Select among N/A, affiliation change, affiliation and school name change, integration, integration and school name change, school name change, promoted to main school and school name change and demoted to branch school and school name change for any school changes between April 2, 2020 and April 1, 2021

- Deactivate '①school name before/after the change and ②school level before/after the change' when the change classification is 'N/A'

- Provided, enter the affiliation change when the high school type has changed (Applicable to changes of general high → specialized high or specialized high → special-purpose high, autonomous high → general high, etc.)

(9) [I]*School Name Before/After the Change: Enter the school name before the change if the school name change is included in the change classification

- Closed school whose change classification is 'integration' should enter the newly (integrated) school name

(10) [J]*School Level Before/After the Change: Enter the school level before the change if the affiliation change or integration is included in the change classification

- Closed school whose change classification is 'integration' should enter the newly (integrated) school level after the change



02 School Teachers

2-1. Teacher Status

1) Basic Information, Salary Class, Position

Ⓐ Basic Information	Name	(Type)
	Resident Registration Number	(Type) -
	Age	(Automatic Calculation)
Ⓑ Salary Grade		Class 1~ Class 10
Ⓒ Position		① Principal (Director) ② Vice Principal (Deputy Director) ③ Head Teacher ④ Teacher (including kindergarten teacher) ⑤ Special Teacher ⑥ Counselor ⑦ Librarian ⑧ Vocational Teacher ⑨ Health Teacher ⑩ Nutrition Teacher ⑪ Instructor (Industry-Educational Adjunct Teacher) ⑫ Instructor (Honorary Teacher) ⑬ Instructor (English Conversation) ⑭ Instructor (Part-Time) ⑮ Instructor (Multi-cultural Language)

(1) [ⒶBasic Information]: Enter name, resident registration number and age

- ① Name: Write the name in Korean for Korean citizens and in English for foreigners
 - No spaces when writing the name in Korean, and for foreign teachers, enter the name registered with NICE, with proper capitalization and spacing
- ② Resident Registration Number: Enter the resident registration number. The last digits of the resident registration number are encrypted for privacy
 - Cannot enter when below the age of 18. The first digit of the later part of the resident registration number cannot be 0 or 9
- ③ Age: The age is calculated automatically as of April 1 of the applicable year when entering the resident registration number

(2) [ⒷSalary Grade]: Select from salary grades 1~40, or added salary grades 1~10

- (3) [ⒸPosition]: Select one from principal (director), vice principal (deputy director), head teacher, teacher (including kindergarten teacher), special teacher, counselor, librarian, vocational teacher, health teacher, nutrition teacher, instructor (industry-educational adjunct teacher), instructor (honorary teacher), instructor (English conversation), instructor (part-time)
- When entering instructor as a position, the following items are deactivated: teaching experience, salary grade, part-time, method of acquiring teacher certification at first employment (current school level), number of work hours outside the weekly teaching activities (semester)
 - Short-term teaching staff should enter a separate 'short-term' item after selecting the position (excluding the instructors)

2) Short-term Teaching Staff, Teachers with Positions, Native Speaker Teacher

Ⓐ Short-term	Applicability	<input type="checkbox"/> Short-Term			
	Type	① Full-time ② Part-time			
	Contracted Work Hours (Based on the Employment Contract)	(Type)			
	Classification	① Filling Vacancy ② Specific Subject ③ Educational Officer Experienced ④ Kindergarten After-School Program			
	Work Period	Start and End Dates			
Ⓑ Teachers Holding Positions	① N/A	② Director of School Affairs	③ Director of Special Activities	④ Director of Environment	
	⑤ Director of Science	⑥ Director of Class	⑦ Director of Practical Course	⑧ Director of Career (College) Counseling	
	⑨ Director of Education (Class) Research	⑩ Director of Life Guidance (Ethics)	⑪ Director of Information (Communications)	⑫ Director of Curriculum	
	⑬ Director of Arts and Sports	⑭ Director of Safety (Lifestyle)			
Ⓒ Native Speaker Teacher	① Yes ② No				

(1) [ⒶShort-Term]: Teachers with a teacher certification and hired for a fixed duration

① Applicability: Mark the box for short-term teaching staff

- If the position is entered as 'instructor,' the short-term applicability is deactivated

② Type: Select from full-time and part-time (not surveyed for private kindergartens)

- Full-Time: Teachers contracted to work full-time

- Part-Time: Teachers contracted to work between 6~35 hours per week

③ Contracted Work Hours (Based on the employment contract): Only applies to part-time teachers, and enter the weekly work hours from the employment contract (enter in whole numbers between 6~35)

④ Classification: Enter the reason for hiring the short-term teaching staff

- For multiple reasons, enter in the order of ㉠filling vacancy ㉡temporary for specific subject ㉢educational officer experience and ㉣kindergarten after-school program

- Filling Vacancy: filling vacancy for leave, dispatch, training, etc. of a teacher

- Temporary for a Specific Subject: when necessary to teach a specific subject temporarily

- Educational Officer Experienced: when knowledge or experience of a former teacher is needed

- Kindergarten After-School Program: when necessary for the kindergarten's after-school program (only for

kindergarten and not other school levels)

⑤ Work Period: Enter the work start and end dates in YYYY/MM/DD format

(2) [B Teachers Holding Positions]: Enter when the teachers holding position are reported to the office of education or when receiving position allowances

- When the position is not available, select the most similar position, and select 'N/A' when not holding any position
- When the position is selected as 'principal, vice principal or head teacher,' 'N/A' is automatically selected for the teachers holding position section
- For private kindergartens, only enter this section when the teacher holding position (non-teaching position) is reported with the office of education or when receiving the position allowances

(3) [C Native Speaker Teacher]: Select "Yes" only for native speaker teachers who are contracted with the principal of the school to teach regular classes, not the after-school programs (native teachers contracted with the office of education are excluded)

- Native Speaker Teacher: teachers for conversation of the language of his/her mother country (citizen of that country)*

* In case of overseas Koreans with a green card, Korean passport holders or naturalized citizens, the person must have completed education from middle school to university and resided in the applicable country for more than 10 years.

3) Changes to Teachers

A Type of Change	Employment Status	① Employed ② Dispatch ③ Reinstated ④ On Leave ⑤ Transfer within Region ⑥ Transferred to Different Region ⑦ Maternity Leave ⑧ New Hire ⑨ Removed from Position
	Retirement Status	⑩ Illness Retirement ⑪ Death ⑫ Regular Retirement ⑬ Disciplinary Dismissal ⑭ Voluntary Resignation ⑮ Other Resignation ⑯ Dismissed at One's Own Request
	Leave Status	⑰ Illness Leave ⑱ Military Leave ⑲ Missing ⑳ Performing Legal Duties ㉑ Labor Union Duty Leave ㉒ Overseas Study ㉓ Employment Leave ㉔ Child-care Leave ㉕ Household Leave ㉖ Training ㉗ Joint Leave ㉘ Self-Training Leave ㉙ Adoption Leave ㉚ Infertility Leave ㉛ Other Legal Leaves ㉜ Other Leaves
B Time of Change	Start Date	Leave Start Date, Dispatch Start Date, Leave/Reinstatement Start Date, Reinstatement Date
	End Date	Leave/ Reinstatement End Date
C Dispatch Location		① Office of Education and Subsidiary Institution ② School ③ Others

(1) [A Type of Change]: Select the applicable changes from 'employment status, retirement status and leave status'

- Only survey the most recent changes during April 2, 2020 ~ April 1, 2021
- Short-term teachers and instructors should enter from 'employed, child-care leave, other leave, dispatch, reinstatement, leave/reinstatement, maternity leave and new hire'

- Private kindergartens founded by 'private' cannot enter 'transfer within region and transferred to a different region'

(2) [B Time of Change]: Only for teachers whose type of change is 'leave, reinstatement, leave/reinstatement or dispatch'

(3) [C Dispatch Location]: Only for teachers whose type of change is 'dispatch,' and select the type of dispatched institution from the office of education and subsidiary institution, school and others.

- Teachers dispatched to the graduate school (university) for job training or certification should select 'Others,' not 'school'

4) Experience

A Current Teacher Appointment Date		
Teaching Experience	B Teacher Experience	(Type)
	C Educational Specialist Experience	(Type)
	Total	(Automatic Input)

※ Provided, pursuant to the Public Officials Remuneration Regulations, more than 15 days shall be deemed to be 1 month

(1) [A Current Teacher Appointment Date]: Enter the current work location appointment date in YYYY/MM/DD format, and enter the appointment date of the current school in case of 'leave, reinstatement or leave/reinstatement'

- When selecting 'new hire,' 'transfer within region' or 'transferred to a different region' in the [Type of Change], [Current Teacher Appointment Date] should be a date between April 2, 2020 ~ April 1, 2021

- Current Teacher Appointment Date of a short-term teaching staff should be same as the 'work start date' of the [Short-term Work Duration]

(2) [B Teacher Experience]: Enter experience as a teacher teaching the students while working at a school stipulated in the Early Childhood Education Act, Elementary and Secondary Education Act and Higher Education Act, such as kindergarten, elementary school, middle school, high school, special school, civic school, high technical school, various schools or social education facilities with recognition of academic background, etc.

- Newly appointed teachers should enter by including the teacher experience prior to the appointment

Example Teacher newly appointed on March 1, 2021: 1 Month + teacher experience prior to the appointment (including experience as a short-term teaching staff, etc.)

(3) [C Educational Specialist Experience]: Enter the educational specialist experience, such as education researcher, school commissioner (inspector) at national or public educational institutions, educational administrative institutions, educational research institutions, etc.

- Educational Institution: Education training institutions

- Education Administrative Institution: Ministry of Education and subsidiary agencies and local and regional offices of education

- Educational Research Institutions: Experience at national or public institutions established for studying/ researching about education

5) Education and Method of Acquiring a Teacher Certification at First Appointment (at the current school level)

Ⓐ Highest Level of Education	① High school or below	② College Degree	③ Masters Degree	④ Ph.D
	⑤ Junior College Graduate (2 Year)	⑥ Junior College Graduate (3 Year)	⑦ Bachelors Degree Courses	
Ⓑ (Current School Level) Teacher Certification Acquisition Method at First Appointment	① N/A	② Graduate of National Teachers College	③ Graduate of Private Teachers College	
	④ Graduate of teaching program	⑤ Graduate of teacher's training program and refresher training	⑥ Persons who passed the teacher qualification exam	
	⑦ Graduate Teachers College	⑧ Graduate of Graduate School of Education	⑨ Others	

(1) [Ⓐ Highest Level of Education]: Select from 'high school or below, college degree, masters degree, PhD, junior college graduate (2 years), junior college graduate (3 years), bachelors degree courses,' and should be based on acquiring a diploma (graduation), not completing the coursework

(2) [Ⓑ (Current School Level) Teacher Certification Acquisition Method at First Appointment]: Select the method of acquiring the teacher certification at the school level of the current school (not the highest level of education)

6) Qualifications

Ⓐ (Current School Level) Highest Certification	Qualification	Refer to the Guideline				
	Acquisition Date					
Ⓑ Certified Subject/ Curriculum		Ⓣ Areas of Certification			Ⓛ Curriculum	
	Appointed Subject	① General Teacher ② Vocational Teacher ③ Special Teacher ④ Others ⑤ No Certificated Subject				
	Non-Appointed Subject (1)	① General Teacher ② Vocational Teacher ③ Special Teacher ④ Others ⑤ No Certificated Subject				
	Non-Appointed Subject (2)	① General Teacher ② Vocational Teacher ③ Special Teacher ④ Others ⑤ No Certificated Subject				
Ⓒ Newly Appointed Teacher - Teaching Certification	Major Classification	Issuance Date	Qualification Type/ Grade	Subject Indicated	Issuing Institution	License No.
Ⓓ Professional Counseling Teacher Certification	① Yes ② No					

(1) [A(Current School Level)Highest Certification]: Enter the type of the highest certification and the acquisition date at the current school level, position and responsible subject

- ① Qualification: Select the corresponding qualification based on the current school level, position and responsible subject
- ② Acquisition Date: Enter the acquisition date of the highest certification (current school level)

(2) [B Certified Subject/ Curriculum]: Survey of the certified areas and curriculum for the appointed subject and non-appointed subjects, and not surveyed for kindergartens and elementary schools

- ㊦ Areas of Certification: Select one from general teacher, vocational teacher, special teacher, others and no certificated subject
- ㊧ Curriculum: Curriculum is shown different depending on the areas of certification and indicate the concerned curriculum
- ㊨ Appointed Subject: Appointed subject of the current school level among the certificates acquired from completing a fixed program at a regular educational institution (responsible subject)
- ㊩ Non-appointed Subject: Up to 2 certificates outside the ‘appointed subject’ acquired from minoring at a university (other schools) or through completing training at educational institutions.

(3) [C Newly Appointed Teacher – Teaching Certification]: Certification information of a regular teacher newly appointed between April 2, 2020 ~ April 1, 2021 at elementary, middle, high and special schools

- ① Major Classification: Automatic input according to the major classification of the teacher certification (major, minor)
- ② Issuance Date: Issuance date of the teacher certification (YYYY/MM/DD)
- ③ Qualification Type/Grade: Type and grade of the qualification of the teacher certification
- ④ Subject Indicated: Subject indicated on the teacher certification
- ⑤ Issuing Institution: Institution issuing the teacher certification (University, Graduate School, Office of Education)
- ⑥ License No.: License number of the teacher certification

(4) [D Professional Counseling Teacher Certification]: Select if possessing a “professional counseling certificate” for all teachers

- Be sure to not confuse with the general teacher certification (subject indicated on the certification: counseling, career and college counseling)

7) (Semester) Weekly Lesson Hours

(Semester) Weekly Lesson Hours	Responsible Subject	㊦ Subject	
		㊧ Creative Experience Activities	(Type)
Total Lesson Hours			(Automatic Calculation)

(1) [Total Lesson Hours]: Number of classes for the regular course during one semester (Lesson times according to the regular class schedule)

- [Total Lesson Hours]= Lesson hours entered in the ‘Subject’ line + Creative experience activity lesson hours
- Supplementary lessons and research hours preparing for the regular class are not included in the lesson hours
- Do not enter the lesson hours for classes at subsidiary institutions, not the school
- For elementary school, be sure to not enter the lesson hours of the curriculum teacher in the homeroom

teacher's lesson hours

(2) [Responsible Subject]: Enter the class subject and lesson hours of the regular curriculum responsible by the teacher

- When responsible for a class with 2 or more grades, enter the subject and the lesson hours based on the grade authorized for the dual class (be careful not to make double entry of class hours by each grade)
- In case of visiting/dispatch teachers, enter the lesson hours of both the original affiliated school and visiting/dispatched school
- When requiring additional input other than the subjects collected in the original data: 'Add Subject'→Select 'Curriculum and Course'→Make additional input by searching the 'Subject Name'
- ※ In case of the free learning semester or free-learning year, select the "Free Learning Semester Course" from the "Subject" tab
- In case the lesson hours of 2 responsible subjects are the same, the main subject should be selected based on the subject indicated in the certification

Ⓐ Subject: Enter the weekly lesson hours of the subject by searching the subject responsible as of the 1st semester

- Only enter the weekly lesson hours for kindergarten and elementary school teachers

Ⓑ Creative Experience Activity: Enter the weekly lesson hours of the responsible creative experience activity (free activities, club activities, volunteer activities, career activities)

- Kindergartens do not enter the creative experience activity

8) Class Schedule Teacher Assignment, Subject Specific Teachers, Invitation, Homeroom Teachers and Work Hours

Ⓐ Class Schedule Teacher Assignment		①Yes ②No
Ⓑ Curriculum		(Special) ①Kindergarten ②Elementary ③Middle School ④High School ⑤Major Course (Various) ①Elementary ②Middle School ③High School
Ⓒ Subject Specific Teacher (Elementary, Special)	Exclusive Teacher	①Yes ②No
	Subject	①Korean ②Foreign Language (English) ③Math ④Ethics ⑤Social Science ⑥Science ⑦Gym ⑧Music ⑨Art ⑩Practical Course ⑪Computer ⑫Discretionary Activities ⑬Integrated Curriculum ⑭Others
Ⓓ Invitation Status	Invited	①Yes ②No
	By Background	①Principal ②Vice Principal ③School Commissioner ④Educational Scholar ⑤School Inspector ⑥Educational Researcher ⑦Teacher ⑧Others
Ⓔ Homeroom Teacher	Grade	(Elementary) 1~6 Grades (Middle/High/High Technical) 1~3 Grades (Special) Kindergarten, Elementary 1~6 Grades, Middle 1~3 Grades, High 1~3 Grades, Major Course (Various) Elementary 1~6 Grades, Middle 1~3 Grades, High 1~3 Grades
	Class	①Regular Class ②Special Class ③Visiting Class
Ⓕ (Semester) Work Hours Outside the Weekly Educational Activities		(Type)

(1) [A] **Class Schedule Teacher Assignment**: Only survey the short-term teaching staff and instructors. Teachers assigned to class based on the class schedule should enter “yes,” and teachers not assigned should enter “no”

Example When a class is **divided into 3 classes by level, the teacher indicated on the class schedule should enter “yes” and the teachers for the other 2 classes should select “no”**

- Not surveying regular teachers, kindergarten teachers and teachers classified as “on leave, resigned”
- Enter ‘no’ for short-term teachers and instructors with ‘0’ hours of (semester) weekly lesson hours

(2) [B] **Curriculum**: Enter the curriculum for the school level of the teacher

- **Only the special schools and various schools** should enter, and enter when the position is ‘**head teacher, teacher (including kindergarten teacher), special teacher and vocational teacher**’
- Teachers who are responsible for the curriculum of several school levels should enter the **curriculum of the school level of his/her main responsibility**

(3) [C] **Subject Specific Teacher**: Teachers exclusively teaching subjects, without being a homeroom teacher

- Only **elementary and special schools** should enter and select whether a subject only teacher and the subject
- Not surveyed for kindergarten, middle school, high school, high civic school, high technical school and various schools

(4) [D] **Invitation Status**: After selecting whether invited, and select the applicable background

- Only applicable for **teachers at national and public schools** appointed by the superintendent after being recommended by a principal, and excludes teachers appointed by superintendents of other city/province
- **All invited teachers should enter ‘yes’** without regards to the change period

① Invited: Select either ‘yes’ or ‘no’ depending on whether invited or not

- **Current national and public school teachers with a teacher certification** pursuant to Article 22(2) of the Early Childhood Education Act and Article 21(2) of the Elementary and Secondary Education Act
- Person satisfying the invitation requirements by concerned schools

② Background: Select from principal, vice principal, school commissioner, educational scholar, school inspector, educational researcher, teacher and others

(5) [E] **Homeroom Teacher**: Enter the grade and class of the homeroom

① Grade: Select the responsible grade for the homeroom teacher of **elementary, middle, high, special and other schools** (excludes kindergarten)

② Class: Select the class type of the homeroom teacher of **elementary, middle, high and special schools** from the regular class, special class and visiting class

- Teachers receiving a homeroom teacher allowance among multiple homerooms should enter the grade of the homeroom class
- If a substitute teacher or a short-term teaching staff is responsible for a homeroom due to leave/sick leave/ maternity leave of the homeroom teacher, the original homeroom teacher should enter ‘N/A’ in the homeroom teacher section and the substitute or a short-term teaching should enter the ‘grade and class’ of the responsible homeroom
- When a dispatched teacher is responsible for a homeroom at the dispatched school, the homeroom grade of the dispatched school should be entered in the original affiliated school
- When a visiting teacher is responsible for a homeroom at all visiting schools, the responsible grade of the original affiliated school should be entered (provided, if not a homeroom teacher at the original affiliated school, then enter the grade of the class with the most weekly lesson hours among the visiting classes)
- The grade and the class number entered in the homeroom teacher section must match the grade and the

class number (regular, special, visiting classes) entered in the student status by age for single/multi classes

(6) [F(Semester) Work Hours Outside the Weekly Educational Activities]: Enter the weekly hours spent on conducting **work outside the educational activities (administrative duties, etc.)** of a teacher on a semester basis

- The sum of the 'total lesson hours' and 'work hours outside the weekly educational activities' cannot exceed 50 hours

* Educational Activities: class preparation time, student counseling (career counseling) hours, life guidance hours, research hours and hours receiving separate allowances (supplementary lessons, after-school activities, early morning class, class no. 8&9, etc.)

2-2. Completion of Training

(1) [Type of Training]: select on from job training, qualification training, special training or other training

- Surveying only the completion of training that issues the certificate of completion, and also include training that can be verified of completion among the training conducted by the office of education

① Job Training: Training necessary to improve qualification, such as educational theory and methodology and job performance

Example Subject, life guidance, informatization, culture-related

② Qualification Training: Training completed for the purpose of acquiring a teacher qualification

Example Principal (director), vice principal (deputy director), head teacher, grade 1 regular teacher, grade 2 regular teachers, teacher assistant (special school vocational teacher), grade 1 counselor, grade 1 librarian, grade 1 health, grade 1 nutrition teacher, etc.

③ Special Training: Training received from domestic/overseas educational or research institutions according to the special training plan of the national or local government

- Enter '0' hours of training hours for a graduate school program (dispatched to SNU, teacher's college, college of education, etc.), overseas study (government funded), special training invited by the Ministry of Education, Culture, Sports, Science and Technology – Japan and programs without training hours, such as the years of research information and learning materials

- Enter the training hours specified on the certificate of training for intensive training program (English teacher intensive training, math teacher capacity building training, etc.) and others (domestic and/or overseas training conducted pursuant to a special training plan of the local office of education)

④ Other Training: Training conducted autonomously at schools or training institutes, other than job training, qualification training and special training

- Enter as other training for training where a certificate of completion is issued but not registered on NICE and credit is not given

※ Pursuant to Articles 6 and 12 of the Regulation on Teacher Training, etc., job training, qualification training and special training are conducted in general

(2) [No. of Training]: Enter the number of training completed during the survey record dates

- **When a same qualification training is completed in two parts during the summer and winter: Enter as a single training**

(3) [Training Hours]: Enter the training hours completed during the survey record dates

03 School Facility Related

3-1. School Lot Status

Ⓐ School Land			Ⓑ Attached Land				Total Total	Ⓒ Joint Use	Ⓓ Joint Use School Name
School Building	Stadium	Sum	Farm	Research Forest	Others	Sum			
								① Yes ② No	

(1) [Ⓐ School Land]: Sum of areas for the school building and stadium within the school

- ① School building: Lot of facilities directly and/or indirectly needed for learning and academic activities, such as the classroom, library, gym, warehouse, etc. other than the stadium (including the stand) in the school land
 - Includes all national, public or private land included in the school land, but only includes cases of the lease contract
 - Area of land for official residence outside the school land should be entered in the “others” section in the attached land (provided, do not fill in for cases of apartments, villas, where only a part of a building is being used)
- ② Stadium: Outside facility established for the student’s physical education
 - Indicate the actual area, including the grandstand area
 - For kindergarten, include the outdoor playground, but excludes the indoor/rooftop stadium and nearby playground

Example exclude the indoor stadium (multi-purpose room, playroom, recreation hall, auditorium, etc.)

(2) [Ⓑ Attached Land]: Sum of areas for farm, research forest and others

- ① Farm: Farm created outside the school land for ecological education, agricultural education, field training, etc.
- ② Research Forest: Forest, school forest, research forest operated and managed by the school outside the school land to conduct field education to students
- ③ Others: Stadium land outside the school land, external dormitory land, external training land, external official residence land, etc.
 - Road in front of the school (example: entrance, etc.) should be entered as ‘others’

(3) [Ⓒ Joint Use]: Select either ‘yes’ or ‘no’ depending on whether all, or part of, the school land and the school building is jointly used by 2 or more schools

- The school land status should be entered based on the property ledger (land ledger), and all school jointly using the land should select ‘yes’

- (4) [D]Joint Use School Names:** When entering 'yes' for joint use, enter all the school names jointly using the school land by searching the school name
- Provided, if using the land with other institutions or jointly using with a university, enter 'no' for joint use

- How to enter for Attached Kindergarten and Elementary School
 - Entered by the elementary school (not entered by the kindergarten)
 - Provided, both the kindergarten and the elementary school should select 'yes' for joint use
- Schools A and B jointly using the school land
 - Entered by the school managing the property ledger
 - Both schools should select 'yes' for joint use
- School A jointly using the school land with a university or an institution
 - Enter the area actually used by School A, not the entire are of the university or the institution
 - Select 'no' for joint use



3-2. Building Status

A Building No.		Automatic Input
B Building Name		(Type)
C Building Structure		①Reinforced Concrete ②Steel framed ③Steel reinforced concrete ④Brick/block ⑤Stone structure ⑥Wooden building ⑦Others
D Safety Grade		①N/A ②Grade A ③Grade B ④Grade C ⑤Grade D ⑥Grade E
E Floor	Ground	(Type)
	Underground	(Type)
F Building Usage		①School Building ②Warehouse/ Garage ③Company Housing ④Night Duty Room ⑤Bathroom ⑥Cafeteria ⑦Auditorium/Gym ⑧Living Hall ⑨Dormitory ⑩Machine Room ⑪Library ⑫Shower ⑬Shop ⑭Greenhouse ⑮Practice/Special Class Room ⑯Others ⑰Security Room
G Building Area		(Type)
H Total Floor Area		(Type)
I Year of Construction		(Type)
J Starting Year for BTL Operation		(Type)
K Structure Reinforced Year		(Type)
L Seismic Reinforced Year		(Type)
M Complex Facility		①Y ②N
N Disaster Preparation Facility (Kindergarten)		<input type="checkbox"/> None <input type="checkbox"/> Emergency Exit <input type="checkbox"/> Sprinkler <input type="checkbox"/> Evacuation Apparatus <input type="checkbox"/> Automatic Fire Detection Equipment <input type="checkbox"/> Emergency Stairs <input type="checkbox"/> Slide <input type="checkbox"/> Direct Stairs
O Building Type (Kindergarten)		①Exclusive ②Common

(1) [A Building Number]: Serial number that the system randomly assigns to each building
 - 'Building number' designated in the [Building Status], and the same as the 'building number' and 'building name' in the [Actual Usage Status] and [Heating and Cooling Status]

(2) [B Building Name]: Building name used and designated by the school

Example Main hall, gym, living hall, science hall, etc.

(3) [C Building Structure]: Select one from reinforced concrete, steel framed, steel reinforced concrete, brick/block, stone structure, wooden building and others, and if a single building is made of 2 or more structures, select the structure with the largest area

Building Structure	Definition
① Reinforced Concrete	Structure using reinforced concrete or with other masonry structures, and includes a reinforced concrete structure where the pillar or column is fixed and adequate
② Steel Framed	Structure where several steel frames and sheets are joined with the rivets or welded
③ Steel Reinforced Concrete	Structure where the steel pillars, walls and floors are poured with concrete or covered with reinforced concrete
④ Brick/Block	Structure where the external walls are built with cement bricks and finished with encoustic bricks or tiles, or covered with mortar. Sometimes the partition walls are made with wood, and wood or reinforced concrete may be used for roof or floors
⑤ Stone Structure	External walls are built with stones
⑥ Wooden Building	New construction method of using plywood, synthetic resins, tile and plaster board, with frame made of lumber
⑦ Others	Select for building structures other than reinforced concrete, steel framed, steel reinforced concrete, brick/block, stone and wooden

(4) [D Safety Grade]: Select one from 'Grade A, Grade B, Grade C, Grade D, Grade E and N/A' pursuant to the Special Act on the Safety Control and Maintenance of Establishments

- Even if the safety rating is not given by the Safety and Technology Corporation, select the relevant grade if the school conducted its own safety inspection

Grade	Definition
① Grade A	The best status without any issues
② Grade B	Good status with minor problems
③ Grade C	Average status with some problems that can be recovered with simple repair or reinforcement
④ Grade D	Deterioration of major defects require highly skilled determination and need to make a determination on whether to restrict the use
⑤ Grade E	Deterioration of major defects is severe and may not be recovered, or need to stop the usage immediately for safety reasons and requires urgent reinforcement
⑥ N/A	Buildings without safety rating from the Safety and Technology Corporation or a school conducted evaluation (old buildings, newly constructed buildings, small buildings, etc.)

- (5) [E Floors]:** Enter above ground floors and basement floors separately
- Provided, if the roof has class-related rooms or temporary buildings, include in the above ground floors
- (6) [F Building Usage]:** Select from school building, warehouse/garage, company housing, night duty room, bathroom, cafeteria, auditorium/gym, living hall, dormitory, machine room, library, shower, shop, greenhouse, practice/special class room, security room and others
- If used for several uses, then select the main usage
- Example** if used as both the night duty room and security room, select as the security room
- (7) [G Building Area]:** Enter the building area from the certified copy of the register (pursuant to the relevant building laws)
- If the exact building area is unknown, enter the area registered in the building register (including the bridge connecting the building)
 - Generally, [building area x no. of floors] is similar to the total floor area
 - The building area should be rounded up to the nearest whole number
- (8) [H Total Floor Area]:** Sum of the area of each floor (Example: 1st+2nd+3rd+4th)
- Basement Floors: Areas of the basement floors are included in the total floor area (including underground parking)
 - ※ Relevant Laws: Article 119 of the Enforcement Decree of the Building Act
 - Rooftop: Include in the total floor area if there are class-related rooms listed in the building ledger
 - Provided, the total floor area should be rounded up to the nearest whole number
- (9) [I Year of Construction]:** Enter the year of construction for each building
- In case of extensions built, enter the year of construction for the first building, and if the year of construction is unknown, enter the year listed in the ledger
- (10) [J Starting Year for BTL Operations]:** The year when the BTL operation method, where the school builds the facility and the government leases the facility, started
- Not a required item, and only enter when applicable
- (11) [K Structure Reinforced Year]:** The year when the construction that increases the bearing power, strength and safety of the structure began
- Not a required item, and only enter when applicable
- (12) [L Seismic Reinforced Year]:** The year of constructing reinforcement to maintain the facility's function and minimize the damage from earthquakes
- Not a required item, and only enter when applicable
 - Buildings requiring seismic reinforcement: more than 2 floors and more than 200m²
- (13) [M Complex Facility]:** Select from Y/N depending on whether the building is a complex facility, but select 'N' when only part of the building is used as a complex facility
- It is a required item and must select either Y/N to save
 - Complex school facility: Project where various welfare facilities are created within the school land, such as child-care, library, sports and culture, etc., and the students and citizens can use the facility as a place of life-long

learning. The school is used as a life-long learning facility for the residents during the after-school hours and weekends, and the public facilities, such as the children’s library, language center, adolescent cultural house, playground within a park, etc., are used for various club activities for the students

(14) [☑Disaster Preparation Facility]: Only for the kindergartens, and the kindergartens attached to schools are excluded from the survey, as the schools complete this section

- Select the facilities established, such as emergency exit, sprinkler, evacuation apparatus, automatic fire detection equipment, emergency stairs, slides and direct stairs (can make multiple selections)

Type	Description
Emergency Exit	- Exit established for emergency accidents within the building • The location must be indicated at all times, and must have lights for nights. Also, it must have batteries or emergency power source in case of power outages
Sprinkler	- Automated fire-extinguishing facility that can operate when the fire starts (including simple sprinklers)
Evacuation Apparatus	- Apparatus to escape from fire or accidents within the building to a safe location • Evacuation ladder, evacuation trap, evacuation rope, descending life line, exit sign, etc.
Automatic Fire Detection Equipment	- Equipment that informs of fire during the beginning by detecting heat, smoke or spark to a relevant personnel within the building by using a bell, siren or other sounds.
Emergency Stairs	- Stairs connected directly from each floor to the ground, without going through the inside of a building, for evacuation during a disaster
Slides	- Evacuation apparatus made to evacuate to the grounds quickly during a fire
Direct Stairs	- Stairs directly connected to the evacuation floor or the ground from all floors of a building

(15) [☑Building Type]: Only for the kindergartens, and select from exclusive and common

- ① Exclusive: Using the building by the kindergarten alone and not sharing with others
- ② Common: Using the building with other facilities, other than the kindergarten

3-3. Status by Actual Usage

(1) Learning Space

General Classroom		Subject Classroom		Special Classroom		Classroom by Level		Others	
No.	Area	No.	Area	No.	Area	No.	Area	No.	Area

- ① General Classroom: Course Classroom, Special Class Classroom
- ② Subject Classroom: Classroom exclusively for a specific course (Korean, English, Math, Science (Theory), etc.)
- ③ Special Classroom: Science Lab (experiments), Music Room, Arts Room, Technical Room, Home Ec. Room, Language Room, etc.

- ④ Classroom by Level: Classrooms by level, exclusive of the course classroom
- ⑤ Others: Health Room, Environmental Room, etc.

(2) (Academic) Support Space

Library		Self-Study Room		AV Room		Computer Room		Multi-Media Room		Auditorium		Gym		Pool		Others	
No.	Area	No.	Area	No.	Area	No.	Area	No.	Area	No.	Area	No.	Area	No.	Area	No.	Area

- ① Library: Place with books where students can read
- ② Self-Study Room: Place where students can study, other than classroom
- ③ AV Room: Place where students can watch academic-related documents, such as data screen (video) and movies
 - Distinguish with [Special Classroom – Language Room], where the students can study listening and speaking to study a language — enter based on the main usage
- ④ Computer Room: Place with computer equipment
- ⑤ Multi-media Room: Place with computer, other equipments and facilities for practical training
 - When it is difficult to distinguish with AV room, enter as AV room
 - When distinguishing computer room with multi-media room is difficult, the place for professional course practice should be entered as multi-media room
- ⑥ Auditorium: Place used only for assembly purposes, without physical education activities
- ⑦ Gym: Exclusive gym or a multi-purpose auditorium for the purposes of physical education activities
- ⑧ Others: Recreational room, etiquette room, dance room, Korean music room, drama room, instrument room, exhibition room, woodwork room, self-study room (study room), child-care room, after-school classroom, etc.

(3) (Teacher) Support Space

Teacher (Course) Research Room		Textbook Room		Teacher Meeting Room		Teachers Lounge		Fitness Room		Others	
No.	Area	No.	Area	No.	Area	No.	Area	No.	Area	No.	Area

- ① Teacher (Course) Research Room: Head teachers office
- ② Textbook Room: Place to store and produce documents necessary for textbooks
- ③ Others: Nursery, teaching material storage room, teaching material production/archive, etc.

(4) (Student) Support Space

Homebase (Locker Room)		Student Lounge		Club Offices		Others	
No.	Area	No.	Area	No.	Area	No.	Area

- ① Others: Student council room, etc.

(5) (Other) Support Space

Student Cafeteria		Teacher Cafeteria		Kitchen		Life Guidance Room		(Career) Counseling Office		Wee Class		Store		Others	
No.	Area	No.	Area	No.	Area	No.	Area	No.	Area	No.	Area	No.	Area	No.	Area

- ① Student Cafeteria: Cafeteria exclusively for student meals (including cases where teachers also use the same cafeteria)
- ② Teacher Cafeteria: Cafeteria exclusively for teacher meals
- ③ Kitchen: Facility attached to kitchen (preparation room, food storage, nutritionist office)

(6) Management/ Administrative Space

Principal's Office		Vice Principal's Office		Administrative Office		Teachers Office		Meeting Room		Computer Room		Broad casting Room		Management Room (Night Duty Room)		Document Archive		Ware house		Printing Office		Others	
No.	Area	No.	Area	No.	Area	No.	Area	No.	Area	No.	Area	No.	Area	No.	Area	No.	Area	No.	Area	No.	Area	No.	Area

- ① Others: Security Office, Document room, School Security Officer's Office, Supplies Room

(7) Other Facilities

Health/ Hygiene Space															Others								Shared Area			
Health Office		Men's Bathroom		Women's Bathroom		Common Bathroom		Student Dressing Room		Student Shower		Teacher Dressing Room		Teacher Shower		Others		Dormitory		Official Housing		Green house		Others		
No.	Area	No.	Area	No.	Area	No.	Area	No.	Area	No.	Area	No.	Area	No.	Area	No.	Area	No.	Area	No.	Area	No.		Area	No.	Area

- ① Men's Bathroom, Women's Bathroom, Common Bathroom: Excludes dormitory bathrooms
- ② Others-Dormitory: Excludes number of dorm rooms (including RA rooms) and official housing
 - When 2 or more schools jointly use 1 dormitory, the school managing the dormitory makes the entry
- ③ Others - Others: electrical room, machine room, water tank, basement parking (building)
 - Temporary bathroom installed outside the building (under playing field, etc.) shall be according to the 'building register'
 - Enter the number and area of the joint-use spaces, such as bathroom, shower, lounge, PC room, etc. within a dormitory shall be entered in [Others – Others]
- ④ Shared Area: The number of shared areas that are not divided into separate rooms, such as hallway, open space, stairs, lobby, elevator, etc. should be entered as 1 (only the area is surveyed)

3-4. Dormitory Status

No. of Rooms	Area	Capacity	No. of Students	No. of Manager	Year of Completion
(Automatically Connected)	(Automatically Connected)				

(1) [No. of Rooms/ Area]: Automatically linked to 'other facilities – dormitory' from [Status by Actual Usage]

(2) [Capacity]: Number of students the dormitory can accommodate

(3) [No. of Students]: The total number of students residing in the dormitory, as of 4/1/2021

- Not including RAs or managing teachers using the dormitory

(4) [No. of Managers]: The number of personnel exclusively controlling and managing the students, such as resident assistants (RAs)

- Teachers who also serve as managers or security guards managing the entire building are not included as managing personnel, and enter '0' if there are no personnel managing/ supervising the dormitory

(5) [Year of Completion]: The year the dormitory building is completed

- If there are 2 or more dormitory buildings, enter the year of completing the construction of the first dormitory building

3-5. Cooling and Heating Status

1) Individual, Central, District or No Heating (Item including total floor area by building)

Heating	Ⓐ Individual Heating	Gas	Area	(Type)
			No. of Rooms	(Type)
		Oil (Petroleum)	Area	(Type)
			No. of Rooms	(Type)
		Coal, Briquette	Area	(Type)
			No. of Rooms	(Type)
	Electricity	Area	(Type)	
		No. of Rooms	(Type)	
		Whether using night electricity	①Use ②Not Use	
	Ⓑ Central Heating	Gas	Area	(Type)
No. Rooms			(Type)	
Oil (Petroleum)		Area	(Type)	
		No. of Rooms	(Type)	

Heating	Ⓑ Central Heating	Coal, Briquette	Area	(Type)
			No. of Rooms	(Type)
		Electricity	Area	(Type)
			No. of Rooms	(Type)
		Whether using night electricity	①Use ②Not Use	
	Ⓒ District Heating	Area	(Type)	
		No. of Rooms	(Type)	
	Ⓓ No Heating	Area	(Type)	
No. of Rooms		(Type)		

(1) [Ⓐ Individual Heating]: A heating system where the users can make adjustment by having a separate space to install a boiler within the building (stand-alone villa)

- Enter the area and the number of rooms by classifying into gas, oil (petroleum), coal, briquette and electricity (regular electricity and night electricity)
- Check whether using night electricity for electricity
- Exclude portable or personal heaters from individual heating

(2) [Ⓑ Central Heating]: A heating system where the users cannot make adjustments as desired by having a common boiler room within the building (has high chimney and typically used in old apartment buildings)

- Enter the area and the number of rooms by classifying into gas, oil (petroleum), coal, briquette and electricity (regular electricity and night electricity)
- Check whether using night electricity for electricity

(3) [Ⓒ District Heating]: Rather than having individual heating facilities for each house or building, having one centralized heating source (Korea District Heating Corp.) for a city or area built to supply the heat to be used for heating and hot water (no separate boiler room)

(4) [Ⓓ No Heating]: Area and number of rooms for not heated areas, such as the hallway and stairs

- The number of rooms and areas entered in the 'other facilities – shared area' in the [Status by Usage] should be entered in the no heating section, but the number of rooms should be entered with '1,' same as the [Status by Usage]

2) Cooling, Floor Heating and Renewable Energy (items not included in the total floor area by building)

Ⓔ Cooling	Area	(Type)
	No. of Rooms	(Type)
Ⓕ Floor Heating	Area	(Type)
	No. of Rooms	(Type)
Ⓖ Renewable Energy (Solar Heat, Photovoltaic, Geothermal, Others)	Energy Source	①Solar Heat ②Photovoltaic ③Geothermal ④Others
	Area	(Type)
	No. of Rooms	(Type)

- The area and number of rooms for renewable energy, cooling and floor heating is duplicated with individual, central, district and no heating areas and number of rooms, so it is excluded when calculating the total floor area
- Each area for renewable energy, cooling and floor heating cannot exceed the total floor area

(1) [E^①Cooling]: Survey the area and number of rooms for cooling within the building

(2) [F^②Floor Heating]: Survey the area and number of rooms with floor heating within the building, such as ondol, electric panel, floor heating line, etc.

- An electric mat is excluded from floor heating
- Enter the area by converting into m² (1 pyung equals 3.3m²)

(3) [G^③Renewable Energy]: Energy from converting renewable energy, such as sunlight, water, geothermal, precipitation, bioorganic material, and enter from solar heat, photovoltaic, geothermal and others

- If there us more than one renewable energy (solar heat, photovoltaic, geothermal and others), enter the main energy source

3-6. Energy Usage

1) Electricity

Electricity	A ^① General Electric Power	Usage (kWh)		
		Charge (KRW)		
	B ^② Night Electric Power	Usage(kWh)		
		Charge (KRW)		
	C ^③ Peak Load (kW)			

(1) [A^①General Electric Power]: Annual electricity quantity and charge used for educational purposes among the electricity used at school

- Annual electric usage and charge, excluding the night electricity usage, from the total electric usage at school

(2) [B^②Night Electric Power]: Annual electric usage and charge from night electric power used at school

(3) [C^③Peak Load]: Enter the maximum value by comparing the monthly peak load from January to December

- Enter '0' if contracted electric power is less than 20kW
- Annual peak load is the peak load at a specific moment and similar to the contracted electric power. Do not confuse with the maximum usage (example: usage during August)

3-7. Computer Ownership Status

⑧ User ⑨ Purchase Year	① Student					② Teachers				③ Employees				④ Others			
	Desktop		Laptop	Tablet	Sum	Desktop	Laptop	Tablet	Sum	Desktop	Laptop	Tablet	Sum	Desktop	Laptop	Tablet	Sum
	⑩ Computer Practice Room	⑪ Non-Computer Practice Room															
Within the last year (2020.3.1.~2021.2.28.)																	
Between 1~2 Years (2019.3.1.~2020.2.29.)																	
Between 2~3 years (2018.3.1.~2019.2.28.)																	
Between 3~4 Years (2017.3.1.~2018.2.28.)																	
Between 4~5 Years (2016.3.1.~2017.2.28.)																	
Between 5~6 years (2015.3.1.~2016.2.29.)																	
Prior to recent 6 years (~2015.2.28.)																	
Total																	

(1) [⑨ Purchase Year]: Enter by selecting one from ‘within the last year,’ ‘between 1~2 years,’ ‘between 2~3 years,’ ‘between 3~4 years,’ ‘between 4~5 years,’ ‘between 5~6 years’ and ‘prior to the past 6 years,’ based on the purchase date registered in the goods ledger

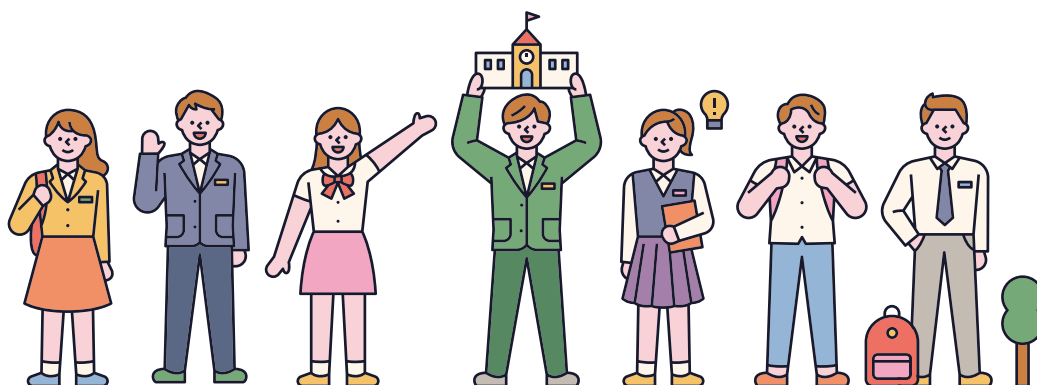
- Provided, the purchase year should be based on the purchase date registered in the goods ledger (school year), but if the order date, goods acceptance date (actual acquisition date) and goods payment date are all different, enter the goods acceptance date for convenience

(2) [⑧ User]: Classify into ‘student,’ ‘teacher,’ ‘employees’ and ‘others’ based on the user, and enter the users with the highest ratio of usage for common computers

- ① Student: computer mainly used for academic purpose by students, such as class, etc.
- ② Teacher: computer mainly used for research or class preparation by teachers (instructors)
 - Including computers within a classroom for a class
- ③ Employee: computer mainly used by employees for administrative or other tasks
 - Computers used in administrative offices, nutrition offices, health offices, libraries and security offices, etc.
- ④ Others: Computer used for purposes other than for students, teachers or employees or computers not being used
 - Computers stored in warehouses because the user is not designated
 - Computers with unclear users (example: computer to manage CCTV) should be entered in the others section

(3) [Type of Computer]: Enter by classifying into desktop, laptop and tablet, and student desktops should be entered by classifying into 'computer practice room' and 'non computer practice room'
 - Barebone computers and server PCs should be entered as desktops

Classification	Definition
① Desktop	<ul style="list-style-type: none"> - Computer that can be placed at desks, etc. and has its own operating system (including all in one PC) • Student desktops should be entered by classifying into the computer practice room and non-computer practice room
	(Student) ① Computer Practice Room <ul style="list-style-type: none"> - Place exclusively for computers, such as computer room, multi-media room and AV room where the class uses computers for information courses and general courses (ICT utilizing classes) * Computer Room: place installed with computer equipment * Multi-media Room: Place with computers and other equipment and facilities for practical training * AV Room: Place with computers to watch learning material, such as data screen (video) and movies - Teachers' computers in the computer practice room should be included in the 'for teacher'
	(Student) ② Non-Computer Practice Room <ul style="list-style-type: none"> - Students computers used in non-computer practice rooms (library, student council office, club office, career counseling office, etc.) ※ In case of specialized high schools, teaching and learning space, where the information communications related course is being taught, should be included in the 'computer practice room,' and the teaching and learning space, where the specialized subject is being taught, should be included in the 'non-computer practice room' * Teaching and Learning Space: general classroom, subject classroom, special classroom, classroom by level, etc.
② Laptop	<ul style="list-style-type: none"> - Light weight computer made for portability with keyboard attached • Includes tab book (keyboard attached) and ATIV PC
③ Tablet	<ul style="list-style-type: none"> - Portable device that can execute programs by touching the screen with a finger or an electronic pen, without a keyboard • Includes Galaxy Tab, Galaxy Note (not the mobile phone), Ipad, Tab-book and Surface



3-8. School Library Status

Ⓐ No. of Libraries	ⒷNo. of Library Employees			Ⓒ No. of Seating	ⒹNo. of Books			Ⓔ Annual Student Lender	Ⓕ No. of Materials Checked-Out by Student in a Year	ⒼBudget (in KRW)	
	Certified Librarian	Non- Certified librarian	Sub- Total		Books	Non- Books	Sub- Total			Mate- rial Purchase	Operating Expenses

(1) [ⒶNo. of Libraries]: Number of libraries whose main purpose is to support the learning and teaching activities of students and teachers

- When 2 or more regular classrooms as one library (reading room), indicate as 1 library
- Exclude places where books are only accessed and searched and electronic libraries

(2) [ⒷNo. of Library Employees]: Survey of whether employees working at school libraries are certified (full-time librarian, educational officials (unlimited contract))

- Excluding librarian teachers hired as teachers, volunteers, self-supporting workers, short-term contract workers and dayworkers
- ※ Be careful not to enter repeatedly as the librarian teachers are included in the [Teacher Status]
- Employees working at school libraries who are hired as full-time and educational officials (unlimited contract) are entered in the [Employee Status] as well

(3) [ⒸNo. of Seating]: Number of seats as of April 1 of the current year

- Enter based on chairs and excludes floor seats

(4) [ⒹNo. of Books]: Number of book and non-book materials as of April 1 of the concerned year

- Book Material: regular books, periodicals (newspaper, magazine, etc.), e-books
- Non-book Materials: DVD, CD, video, etc.

(5) [ⒺAnnual Student Lenders]: No. of student lenders for the year from March 1, 2020 to Feb. 28, 2021

(6) [ⒻNo. of Materials Checked-Out by Students in a Year]: Number of materials checked out by students in a year, between March 1, 2020 ~February 28, 2021

- If student A checked out 1 material on May 1 and 2 materials on May 2,
→ 2 Students checking-out in a year and 3 materials check-out by students in a year

(7) [ⒼBudget]: Enter (in KRW) based on the main budget (excluding supplementary budget and balance carried forward) included in the school basic operating expenses as a budget to manage libraries during the 2021 school year, and distinguish materials purchase expenses and operating expenses

- Provided, specific project expenses and personnel expenses are excluded
- Branch school should be entered by the main school, but if the budget for the library is separately included in the branch budget, then it should be entered by the branch school (cannot be entered repeatedly)

① Material Purchase: Books and non-book material purchase expenses and class library book purchase expenses

- Exclude the materials purchase expenses if the materials are purchased from the development fund, not through school accounting

- Provided, 'class library book purchase expenses' are limited to class library books purchase expenses included in the school library operating expenses

- ② Operating Expenses: Expenses necessary for the operation of the library, such as expenses for supplies, managing reading program, purchase of periodicals and newspaper subscription, etc., other than the materials purchase expenses



04 Employee Status

Name	(Type)
Resident Registration No.	(Type)
Age	(Automatic Calculation)
Ⓐ Position	(Type)
Ⓑ Salary Grade	Salary Grade 1 ~ Added Salary Grade 10
Ⓒ Job Category	① General ② Educational Official (unlimited contract)
Ⓓ Public Official Classification	① State Public Official ② Local Public Official ③ Private School ④ Others
Ⓔ Functional Category	Refer to the guideline
Ⓕ Rank	Ranks 1~9, Research Official, Researcher, A~E, Others
Ⓖ Appointment Date of Current institution (School)	
Ⓗ Appoint Date of Current Rank	
① Change Classification	① Employed ② On leave ③ Dispatch ④ Retired ⑤ New Hire

(1) [Ⓐ Position]: Enter the position as of the survey date (Example: General manager, administrator, general affairs manager, administrative manager, etc.)

- Provided, position is an optional item and can save without making an entry

(2) [Ⓑ Salary Grade]: Select from salary grades 1~40 and added salary grades 1~10

- Do not enter the salary grade for people subjected to performance based salary (higher than grade 5) and educational officials (unlimited contract) (deactivate the salary grade system)

※ Enter by referring to the wage table of public officials in general service and other similar public officials in foreign service and extraordinary civil service pursuant to Article 5 [Attached Table 3] of the Public Officials Remuneration Regulations

(3) [Ⓒ Job Category]: Select from 'general position' and 'educational official (unlimited contract)' (Article 2 of the Local Public Officials Act)

① General Service: public officials who take charge of technical or research affairs or affairs concerning general administration

② Educational Official (Unlimited Contract): Employees with an unlimited contract with the office of education or the school principal to support and assist education and/or administrative duties at each school

- Entered by the place of work, without regards to the contracting parties (entered by the school for school employees contracted with the office of education, and entered by the actual place of work in case of the attached kindergartens and integrated schools)

(4) [D] **Public Official Classification**: Select from state public official, local public official, private school and others

(5) [E] **Functional Category**: Select by distinguishing general service and educational official (unlimited contract)
- Among educational officials (unlimited contract), persons responsible for office administration and the after-school program should enter as '1 school affairs', facility manager, custodian and security guards should enter as '6 facility management', and school sheriff and the exclusive coach should enter as '16 others'

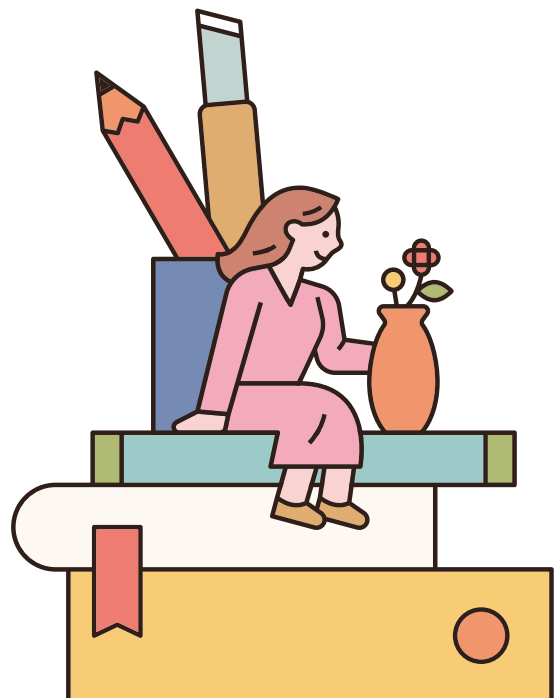
(6) [F] **Rank**

- ① General Service: Enter from Grades 1~9, A~E and others
- ② Educational Official (unlimited contract): deactivated as 'others'

(7) [G] **Appointment Date of Current Institution (School)**: Enter the first appointment date of the current institution
- Provided, educational officials converted from short-term contract worker to unlimited contract worker should enter the date of conversion to the unlimited contract worker, not the first hiring date

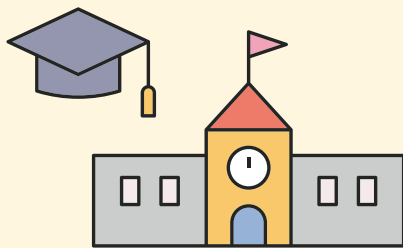
(8) [H] **Appoint Date of the Current Rank**: Enter the appointment date of the current rank or date of promotion

(9) [I] **Change Classification**: Select from employed, on leave, dispatch, resignation, new hire, etc. during the period of April 2, 2020 ~ April 1, 2021
- Service training should be entered as 'dispatch'



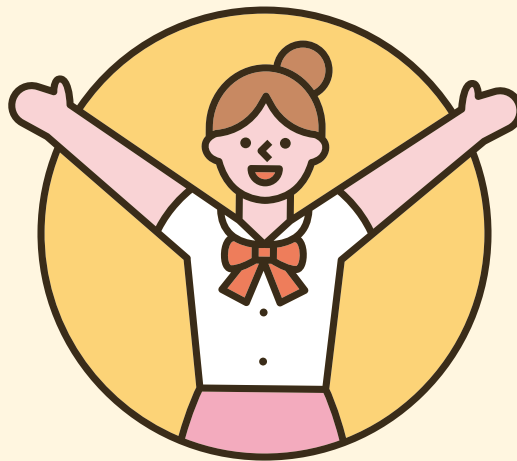


Kindergarten, Elementary Secondary
Education Statistics Survey Guideline



02

Survey Items by School System



II Survey Items by School System

01 Kindergarten

1-1. No. of Students by Age and Class Status

1) No. of Students by Age

(1) [No. of Students]: Enter the number of students as of April 1, 2021 by gender

(2) [Age]: Enter the age based on the age calculation by verifying the year of birth (refer to the full age conversion chart)

2) Class Status by Age

Classification		Class Status by Age (General Class)						Sub-Total	Special Class	Visiting Class	Total
		Age 3	Age 4	Age 5	© Integrated Class						
					Ages 3~4	Ages 4~5	Ages 3~5				
Ⓐ Authorization	No. of Classes										
	Capacity										
Ⓑ Form	No. of Classes										
	Capacity										
	Current Status										

(1) [Ⓐ Authorization]: No. of authorized classes and capacity, as of April 1, 2021

① No. of Classes: Enter the authorized number of classes by classifying into general class, special class and visiting class

- Make the same entry as the form class, if no authorized class

② Capacity: Enter the authorized maximum capacity without classifying into class according to the entry method of national/public and private

1-3. No. of New Students and No. of Graduates

1) No. of New Students

- (1) **[New Students]**: Enter the number of new students during the concerned year by gender
 - Exclude re-enrollment students (advancing to upper grade)

2) No. of Graduates

- (1) **[No. of Graduates]**: Enter the number of students who completed the kindergarten program during the 2020 school year (Feb. 2021) by gender
 - Exclude the students who completed Age 3 class and Age 4 class, who are not graduating

1-4. Employee Status

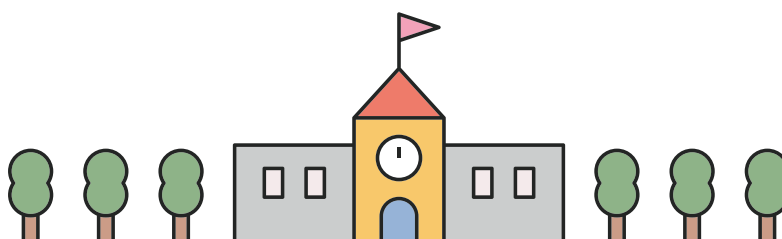
Ⓐ Position		General Affairs (Administrative)	Others (Supporting)
Employee Status	Ⓑ Capacity		
	Current Status	Male	
		Female	
		Total	

- (1) **[Ⓐ Position]**: Select either general affairs (Administrative) and others (supporting), but if difficult to make the classification, then enter the position corresponding to the main duties

- Provided, regular employees, unlimited contract workers and annual contract workers (working more than 1 year) are included, but contract workers (less than 1 year of work) and daily workers are not included

- ① General Affairs (Administrative): Employees hired exclusively for general affairs (administrative position, etc.)
 ② Others (Supporting Positions): Employees hired to perform technical duties, other than the general affairs (administrative) positions (cook, driver, etc.)

- (2) **[Ⓑ Capacity]**: Enter the capacity for general affairs (administrative). Private schools without authorized capacity should enter the current status as the capacity



1-5. Multi-Cultural Students Status

- (1) **[Children Born in Korea from Multicultural Families (A)]**: Child(ren) born in Korea between one Korean parent and one foreign parent
- Provided, excluding children whose parents are Korean, but through re-marriage, one parent is a foreigner
- (2) **[Children from Multicultural Families and Moved to Korea (B)]**: Child(ren) born overseas between one Korean parent and one foreign parent, without regards to whether the foreign parent became a naturalized Korean citizen, and moved to Korea with his/her parents
- Including children of a married immigrant person (foreigner who immigrated to Korea after marrying a Korean person) who moved to Korea after the married immigrant parent re-married a Korean
 - Include children born to two foreign parents but one parent re-married to a Korean
- (3) **[Children of a Foreign Family (C)]**: Children whose parents are both foreigners and residing in Korea (Children of foreign workers, children of overseas Koreans, etc.)
- (4) **[Country Classification]**: Enter the number of multicultural students from Japan, China, China (Korean descent)*, Taiwan, Mongolia, Philippines, Vietnam, Thailand, Cambodia, Indonesia, Russia, Central Asia, Russia & Central Asia (Korean descent)*, Middle East, USA, Europe, Africa and others
- Ethnic Koreans should be entered as China (Korean descent)* and Russian Koreans should be entered as Russia & Central Asia (Korean descent)*
 - Central Asia: Uzbekistan, Kazakhstan, Kyrgyzstan, Tajikistan, Turkmenistan
 - Middle East: Qatar, Bahrain, Afghanistan, Iran, Iraq, Syria, Jordan, Saudi Arabia, Lebanon, Israel, Kuwait, Yemen, Oman, Somalia, Ethiopia, Sudan, Egypt, Libya
 - Others: countries other than the above
- (5) **[Age]**: Enter the age based on the age calculation by verifying the year of birth (refer to the full age conversion chart)



02

Elementary, Middle and High School

2-1. Student Status by Class and Age

(Elementary School)

◎ Student Status of a Single Class by Age

ⒶClass Classification ①General Class ②Special Class ③Visiting Class	ⒷGrade ①Grade 1 ②Grade 2 ③Grade 3 ④Grade 4 ⑤Grade 5 ⑥Grade 6						ⒸClass ①Class 1 ②Class 2 ③Class 3...				
	ⒹAge Under 5 6 Years Old 7 Years Old 8 Years Old 9 Years Old 10 Years Old 11 Years Old 12 Years Old 13 Years Old 14 Years or Older	Under 5	6 Years Old	7 Years Old	8 Years Old	9 Years Old	10 Years Old	11 Years Old	12 Years Old	13 Years Old	14 Years or Older
Gender											
Male											
Female											
Sum											

◎ Student Status of Multiple Classes by Age

ⒶClass Classification ①General Class ②Special Class ③Visiting Class	ⒸClass ①Class 1 ②Class 2 ③Class 3...						ⒷAuthorized Grade ①Grade 1 ②Grade 2 ③Grade 3 ④Grade 4 ⑤Grade 5 ⑥Grade 6				
	ⒹBy Age Under 5 6 Years Old 7 Years Old 8 Years Old 9 Years Old 10 Years Old 11 Years Old 12 Years Old 13 Years Old 14 Years or Older	Under 5	6 Years Old	7 Years Old	8 Years Old	9 Years Old	10 Years Old	11 Years Old	12 Years Old	13 Years Old	14 Years or Older
Gender											
Male											
Female											
Sum											

(Middle School)

© Student Status of a Single Class by Age

Ⓐ Class Classification	①General Class ②Special Class ③Visiting Class						Ⓒ Grade	①Grade 1 ②Grade 2 ③Grade 3			
Ⓓ Class	①Class 1 ②Class 2 ③Class 3...						Ⓑ Day/ Night	①Day ②Night			
Ⓔ By Age	Under 11	12 Years Old	13 Years Old	14 Years Old	15 Years Old	16 Years Old	17 Years Old	18 Years Old	19 Years Old	20 Years or Older	Sum
Gender											
Male											
Female											
Sum											

© Student Status of Multiple Classes by Age

Ⓐ Class Classification	①General Class ②Special Class ③Visiting Class						Ⓑ Day/Night	①Day ②Night				
Ⓒ Authorized Grade	①Grade 1 ②Grade 2 ③Grade 3						Ⓓ Class	①Class 1 ②Class 2 ③Class 3...				
Ⓔ By Age	Under 11	12 Years Old	13 Years Old	14 Years Old	15 Years Old	16 Years Old	17 Years Old	18 Years Old	19 Years Old	20 Years Old	21 Years or Older	Sum
Gender												
Male												
Female												
Sum												

(High School)

© Student Status of a Single Class by Age

Ⓐ Class Classification	①General Class ②Special Class ③Visiting Class		Department	
Ⓑ Day/Night	①Day ②Night		Ⓒ Grade	①Grade 1 ②Grade 2 ③Grade 3
Ⓓ Class	①Class 1 ②Class 2 ③Class 3...			

Gender	By Age	Under 11	12 Years Old	13 Years Old	14 Years Old	15 Years Old	16 Years Old	17 Years Old	18 Years Old	19 Years Old	20 Years Old	21 Years or Older	Sum
	Male												
Female													
Sum													

◎ Student Status of Multiple Classes by Age

Gender	By Age	Class Classification					Department		Day/Night					Total
		Under 11	12 Years Old	13 Years Old	14 Years Old	15 Years Old	16 Years Old	17 Years Old	18 Years Old	19 Years Old	20 Years Old	21 Years or Older		
Male														
Female														
Sum														

(1) [No. of Classes]: Enter the actual classes created as of April 1, 2021

- ① Single Class: Classes with students from the same grade
 - Students entered in the single class cannot be entered again in multiple classes
- ② Multiple Class: Classes with students from 2 or more grades
 - Example** When both students from grades 1 and 2 are in the same class

(2) [Class Classification]: Select from the general class, special class and visiting class

- ① General Class: General class in general schools
 - Select general class for special classes for returning students and special classes for multicultural students (Korean class)
- ② Special Class: Classes established in general schools for the integrated education of persons eligible for special education
 - Persons eligible for special education who take classes at both general classes and special classes should be entered as students in special class
 - Provided, students (complete integration) who take classes only in general classes should be entered as students in general class
- ③ Visiting Class: Classes established to educate the persons eligible for special education who are at hospitals (medical institutions), home or welfare facilities (welfare facilities for the disabled people or children, etc.)
 - Only enter the visiting classes created with authorization from the office of education, and enter the number of students registered with the main school (do not include students registered with other schools)

(3) [ⓑ(Authorized) Grade]

- Single Class: Enter the applicable grade (Grade 1, Grade 2, Grade 3, Grade 4, Grade 5, Grade 6)
- Multiple Class: Enter the authorized grade, but if there is no authorized grade, enter the highest grade

(4) [ⓒClass]

- Single Class: Enter from Class 1 by grade (Class 1, Class 2, Class 3...)
- Multiple Class: Enter starting from Class 1, without grade distinction

(5) [ⓓBy Age]: Enter the age based on the age calculation by verifying the year of birth pursuant to the school student record (refer to the full age conversion chart)

- Enter the number of students by grade and class, and do not enter all students in a grade in one class

(6) (High School) [Department]: Enter [7th General] for general high school without separate departments. In case the name of the department cannot be searched for schools not using NICE, select the most similar department

- The list of departments on the screen is information linked to the NICE system, and if a new department needs to be added, ask school's NICE manager

2-2. Authorized Class Status

(1) [Number of Authorized Classes]: Enter the number of classes authorized by the office of education by distinguishing into general class (by grade), special class and visiting class, as of April 1, 2021

- ① General Class: General classes authorized at general schools
- ② Special Class: Classes established at general schools for the integrated education of persons eligible for special education
- ③ Visiting Class: Classes established to educate the persons eligible for special education who are at hospitals (medical institutions), home or welfare facilities (welfare facilities for the disabled people or children, etc.) (Only enter the visiting classes authorized by the office of education)

2-4. Admissions Status and Non-Enrollment Status

1) Admissions Status

(Elementary School)

Classification	Survey Items		ⒹSchool-aged children			ⒺPostponed and over-the-age children			ⒻEarly admissions children			Total		
			M	F	Sum	M	F	Sum	M	F	Sum	M	F	Sum
Admissions Status	ⒶCompulsory Admissions Subject													
	Admitted	ⒷAdmitted among persons subject to compulsory enrollment												
		ⒸOther admitted												
		Total Admitted												
	Non-Enrolled(Ⓐ-Ⓑ)													

(Middle School)

Classification		ⒸCurrent Year Elementary School Graduate	ⒹElementary School Graduates from Prior Year	ⒺQualification Exam and Other Program Graduates	ⒻOthers	Total
ⒶAdmissions Applicant	Male					
	Female					
	Total					
ⒷEnrolled	Male					
	Female					
	Total					

(High School)

Classification		㉓ Current Year Elementary School Graduate	㉔ Middle School Graduates from Prior Year	㉕ Qualification Exam and Other Program Graduates	㉖ Others	Total
㉑ Admissions Applicant	Male					
	Female					
	Total					
㉒ Enrolled	Male					
	Female					
	Total					

(1) (Elementary School) [㉑ Persons Subject to Compulsory School Enrollment]: Children subject to compulsory school enrollment who are born between Jan. 1, 2014~Dec. 31, 2014

- Including children who were not enrolled during the prior year (granted postponement of school enrollment, etc.) and children wishing for early enrollment
- Provided, exclude children already enrolled from early admissions and children approved for delay in enrollment

(2) (Elementary) [Admitted Person]: Enter by distinguishing 'admitted person among the persons subject to compulsory school enrollment' and 'other admitted persons'

- ① [㉒ Admitted persons among the persons subject to compulsory education]: enter by classifying into school-aged children, postponed and over-the-age children and early admissions children
- ② [㉓ Other Admitted Persons]: enrolled students other than 'admitted persons among the persons subject to compulsory school enrollment'

Example Child(ren) of overseas Korean or under guardianship of a foreigner

(3) (Elementary) [㉔ School-aged Children]: children of proper school enrollment age in 2021 (Children born between Jan. 1, 2014 ~ Dec. 31, 2014)

(4) (Elementary) [㉕ Postponed and Over-the-Age Children]: Children who delayed or postponed school enrollment during the prior year (2020)

- Not including children who postponed after being enrolled

(5) (Elementary) [㉖ Early Admissions Children]: Early admitted children among the persons subject to compulsory school enrollment in the current year (2021)

(6) (Elementary) [㉑ Admissions Applicant]: Number of students applying for admissions to the concerned school

(7) (Elementary) [㉒ Enrolled]: Number of enrolled students on the first day of school

(8) (Middle School) [Current Year Elementary Graduates]: Persons who graduated from elementary in February of the concerned year (2021)

- (9) (Middle School) [D]Elementary Graduates from Prior Year:** Graduates from years prior to the current year (2021) (Graduates from 2020 or before)
- (10) [D]Middle School Graduates from Prior Year:** Graduates from years prior to the current year (2021) (Graduates from 2020 or before)
- (11) [C]Current Year Middle School Graduates:** Persons who graduated from middle school in February of the concerned year (2021)
- (12) (Middle & High School) [E]Qualification Exam and Other Program Graduates:** Persons who obtained qualification for admissions through the qualification exam and other program completion
- (13) (Middle & High School) [F]Others:** Enter foreign school attendee, re-enrolled student, transfer student, outside the quota, etc., other than current year elementary graduate, elementary graduate from prior year, qualification exam and other program graduates
- Foreign school attendee: Persons who attended foreign schools, with a proof of attendance through transcript, proof of enrollment or immigration records, etc.
 - Re-enrolled student: person, subject to compulsory education, who suspended the compulsory education and re-enrolled at the school corresponding to the compulsory education
 - Transfer student: persons, not subject to compulsory education, who suspended schooling, re-enrolls at another school or re-admitted to a higher grade
 - Students on a supernumerary school register: number of students on a supernumerary school register, such as special case admitted (excluding foreign school attendee), child of person of national merit, person subjected to special education, physically handicapped persons, etc.
- (14) (High School) [Day and Night]:** Automatically filled in from the [School Overview]
- (15) (High School) [Department]:** Automatically filled in with the department selected in [Department Selection]
- (16) (High School) [Admissions Capacity]:** Enter the capacity for each department

2) Children Non-Attending School (Elementary Only)

Classification		Reason	School-Aged Children			Postponed & Over-the-Age Children			Early Admissions Children			Sum		
			M	F	Sum	M	F	Sum	M	F	Sum	M	F	Sum
Non-Attending Child Status	Ⓐ Postponement	Illness												
		Under Development												
		Disability												
		Non-Approved Study Abroad												
		Missing												
		Family Circumstance												
		Others												
		Sum												
	Ⓑ Exempt	Illness												
		Disability												
		Left Country												
		Others												
		Sum												
	Ⓒ Non-Enrollment	Attending Alternative School												
		Others												
Sum														
Sum of Child Not-Attending School														
[Enrollment] Non-Attending Child														

(1) [Ⓐ Postponement]: Persons who postponed the obligation to receive education pursuant to Article 14 of the Elementary and Secondary Education Act, and enter one from illness, under development, disability, non-approved study abroad, missing, family circumstances and others

(2) [Ⓑ Exempt]: Persons exempted from the obligation to enroll and receive education pursuant to Article 14 of the Elementary and Secondary Education Act, and enter one from illness, disability, left country and others - Children under long-term treatment due to a car accident, etc. should be included in illness

(3) [©Non-Enrollment]: Enter either attending an alternative school or others (attending foreign school and students who cannot attend school for other reasons, etc.)

- Alternative School: Schools which provide various education, such as experience-oriented education, including field practices, character education, and education focused on the development of the talents and aptitudes of individuals for students who drop out of other schools or want to receive education suitable for their characteristics

2-5. Students Suspending School and Status of Student Changes

1) Status on the Students Suspending School

(Elementary and Middle School)

Classification		A Postponement					B Exemption				C Death	Total (Excluding Death)
		① Illness	② Long-term Absence	③ Non-Approved Study Abroad	④ Others	Sub-Total	① Illness	② Left Country	③ Others	Sub-Total		
By Grade	M											
	F											
	Sum											

(High School)

Classification		Drop Out									Sub-Total
		① Illness	② House work	Maladjustment					⑦ Left Country	⑧ Others	
				③ School Related	④ People Related	⑤ School Rules	⑥ Others	Sub-Total			
By Grade	M										
	F										
	Sum										

(1) [A Postponement]: Persons under postponement after enrollment pursuant to Article 29 of the Enforcement Decree of Elementary and Secondary Education Act or students who has been absent for such a long term as at least one-third of the number of school days for the relevant school year

- Postponing the obligation to receive education to the following school year, and may be considered 'students on a supernumerary school register'

① Illness: underdevelopment, emotional disorder, physical disability, accident (car accidents) and other illnesses

② Long-term Absence: absent for at least one-third of the number of school days for the relevant school year

without due reason

- ③ Non-approved study abroad: study abroad of leaving the country not approved by law or superintendent guidelines
- ④ Others: reasons not applicable under illness, long-term absence or non-approved study abroad

(2) [ⓑExemption]: Students exempted from enrollment and education obligations pursuant to Article 14 of the Elementary and Secondary Education Act

① Illness: Illnesses determined by the superintendent

※ Relevant Laws: Article 28(4) of the Elementary and Secondary Education Act

② Leaving the Country: When the obligation of enrollment cannot be met due to legal reasons, such as approved study abroad and proper leaving of the country, etc.

- Approved Study Abroad: When approved by the superintendent of education or the director of the National Institute of International Education pursuant to Articles 5~14 of the Regulation on Overseas Study Abroad

- Leaving the Country Properly: when leaving the country with family due to immigration, overseas dispatch of a parent who is the government employee or corporate expatriate, overseas employment of a parent, etc.

③ Others: in case of other illnesses, not stipulated by the superintendent or for other unavoidable reasons (missing guardian)

※ Relevant Laws: Article 28(4) of the Enforcement Decree of the Elementary and Secondary Education Act

(3) [ⓒDeath]: Number of deceased students (including suicide) while in school

- Deaths exempted in the school record are not included in the number of students suspending education, and linked to death under [student change status]

(4) (High School) [Drop Out]: giving up high school pursuant to the student's own wishes due to personal or family circumstances (unavailable for schools considered compulsory education and students subjected to special education)

① Illness: emotional disorder, physical disability, accident (car accident) and other illnesses

② Housework: economic circumstances (debt, etc.), family troubles (divorce), unstable residence, others (caring for parents)

③ Maladjustment (school related): under-achievement, avoid studying (no motivation, unenthusiastic attitude), etc.

④ Maladjustment (people related): school violence (bullying, extortion, threat, assault, etc.), inexperienced peer relationship, conflict with teacher, etc.

⑤ Maladjustment (school rules): maladjustment to school regulations, such as hair/dress code, smoke/alcohol prohibition, etc.

⑥ Maladjustment (Others): other maladjustment, other than school, people, and rules related maladjustments

⑦ Leaving the Country: Study abroad, language training, immigration, accompanying dispatch, etc.

⑧ Others: suspension of education from one's own wishes, such as early advancement, religion, broadcasting business, etc.

(5) (High School) [Expulsion]: Expelled from school due to school rules, such as disciplinary action, at high school (unavailable for compulsory education schools and students subjected to special education)

① Behavior (Requesting Deliberative Committees to Deal with School Violence): expulsion as a measure against the aggressor student pursuant to Article 17(1)(9) of the Act on the Prevention of and Countermeasures Against Violence in Schools

② Behavior (Disciplinary action pursuant to the violation of school rules): expulsion as the measures to discipline

students pursuant to the stipulations of the laws and school rules pursuant to Article 31(1)(5) of the Enforcement Decree of the Elementary and Secondary Education Act (excluding expulsion pursuant to Article 17(1)(9) of the Act on the Prevention of and Countermeasures Against Violence in Schools)

(6) (High School) [Disenrollment]: Students suspending education due to the reasons of missing or out of contact, not due to reasons of dropping out (voluntary) or expulsion (compulsory) (unavailable for compulsory education schools and students subjected to special education)

2) Student Change Status

(1) [Factors for Increase]

Classification		Ⓐ	Ⓑ	Ⓒ	Ⓓ	Ⓔ	Ⓖ Failed	Ⓗ Transfer			Total
		Admission	Enrollment	Re-Enrollment	Transfer Admission	Early Admission		Ⓕ Early Advancement	Out of State	In State	
By Grade	M										
	F										
	Sum										

- ① [Ⓐ **Admission**]: Students admitted last year (2020) (1st graders)
- ② [Ⓑ **Enrollment**]: entering school corresponding to compulsory education for the first time
- ③ [Ⓒ **Re-enrollment**]: Starting to attend elementary school by students subjected to compulsory education who were under 'exemption, postponement, supernumerary school register' to receive compulsory education
- ④ [Ⓓ **Transfer Admission**]: persons, not subject to compulsory education, who suspended schooling, re-enrolls at another school or re-admitted to a higher grade
 - When a person who is not subjected to compulsory education re-enrolls in the same school at the same grade or lower grade, it is also considered a transfer
- ⑤ [Ⓔ **Early Admission**]: Persons not subjected to compulsory education enters school earlier than the proper age as a student
- ⑥ [Ⓕ **Early Advancement**]: advancing to a higher grade by early completion of the curriculum of the higher grade pursuant to school rules
- ⑦ [Ⓖ **Failing**]: Unable to advance to the higher grade due to non-completion of the curriculum of the concerned grade
 - Number of students who are repeating the same grade (grade in 2019) in 2020
- ⑧ [Ⓗ **Transfer**]: Student from other school becomes student at our school
 - Enter as transfer when a student goes to overseas Korean school (Korean school located overseas)
 - When the first opening school (example: opening on Sept. 1, 2020) is not accepting new students but receiving students from nearby schools, it is entered as a transfer
 - When transferring school records from foreign schools (foreign educational institutions) located in Korea to Korean schools, it is processed as a transfer according to the school record processing standard of the NICE guideline

(2) [Factors for Reduction]

Classification	A Graduation	B Early Graduation	C Honorary Graduation	D Postponement	E Exemption	F Early Enrollment	G Failed	H Early Advancement	I Death	J Transfer			Total
										In State	Out of State	Sub-Total	
By Grade	M												
	F												
	Sum												

- ① [A Graduation]: Completing the elementary school curriculum for the entire grades (February 2021 graduates)
- ② [B Early Graduation]: Completing the entire elementary school curriculum early by shortening the schooling according to school rules (including the early graduates of the graduating year)
- ③ [C Honorary Graduation]: When the school principal approves as an honorary graduate as stipulated in the school rules for deceased who died from unforeseeable accidents during the school activities or while performing socially beneficial activities
- ④ [D Postponement]: Automatically linked with 'sub-total for postponement' from the [Status of Students Suspending School]
- ⑤ [E Exemption]: Automatically linked with 'sub-total for exemption' from the [Status of Students Suspending School]
- ⑥ [F Early Enrollment]: Persons not subjected to compulsory education enters school earlier than the proper age as a student and stops schooling
- ⑦ [G Failed]: Unable to advance to the higher grade for not completing the curriculum for the concerned grade
- Number of students who are repeating the same grade (grade in 2020) in 2021
- ⑧ [H Early Advancement]: advancing to a higher grade by the early completion of the curriculum of the higher grade pursuant to the school rules
- ⑨ [I Death]: Automatically linked with 'death' from [Status of Students Suspending School]
- ⑩ [J Transfer]: Abandoning the school records of the concerned school in order to transfer to a different school
- Enter as transfer when a student goes to an overseas Korean school (Korean school located overseas)
- When transferring school records to a foreign school (foreign educational institutions) located in Korea, it is processed as a transfer according to the school record processing standard of the NICE guideline

2-6. Status of Students on Leave of Absence (High School Only)

- (1) [Illness]: enter the number of students on leave of absence due to emotional disorder, physical disability, accident (car accidents) and others (game addiction)
- (2) [Housework]: number of students on leave of absence due to economic circumstances (debt), family troubles (divorce), unstable residence, others (caring for parents)
- (3) [Behavior]: number of students on leave of absence due to assault (aggressor), theft, relationship and others

- (4) **[Maladjustment]**: number of students on leave of absence due to strict school rules, underachievement, avoiding study, personal (friend, teacher) relationships, victim of a school violence (bullying, assault), etc.
- (5) **[Military Service]**: number of students on leave of absence due to military service
- (6) **[Others]**: number of students on leave of absence due to reasons other than illness (health), maladjustment, behavior, housework and military service

2-7. Post-Graduation Status

(Elementary School)

- (1) **[Number of Graduates]**: Number of graduates in February 2021 (including early graduates)
- (2) **[Attending Middle School]**: Enter the students who are attending middle school, including specialized middle schools (international, arts, sports and alternative)
- (3) **[Other Enrollment]**: Students enrolled in high civic school, various kinds of schools, special schools, foreign schools and overseas educational institutions (recognizing academic background)
 - Persons enrolled at schools other than schools established based on the Elementary and Secondary Education Act and school recognizing academic background (including overseas educational institutions) should be excluded from the number of enrolled students and enter as 'not attending'
- (4) **[Not-Attending]**: Persons who are not attending higher level schools due to personal reasons
- (5) **[Unknown]**: Persons whose circumstances are unknown after graduation

(Middle School)

Classifi- cation	Enrollee to College																			
	Ⓐ General High School		Ⓑ Specialized High School		ⒸSpecial Purpose High School								ⒹAutonomous High School				ⒺOthers			
	In- state	Out of State	In- state	Out of State	Science High School		Foreign Language & Foreign High School		Arts & Sports High School		Meister High School		Sub- Total	Autonomous Private High School		Autonomous Public High School			Sub- Total	
					In- state	Out of State	In- state	Out of State	In- state	Out of State	In- state	Out of State		In- state	Out of State	In- state	Out of State	In- state		Out of State
M																				
F																				

(High School)

Day/Night Classification					Department Name			ex) 7 th General				
Classification	Gender	Graduate	Sum of Post-Graduation Status	Enrollee to Higher Level (April)			Employed	Others			Acquired Technical Licenses	
				Sum of Enrollee	Ⓐ Enrollee to Korean Colleges	Ⓑ Enrollee to Overseas Colleges		Unemployed & Unknown	Military Service	Special School Training		
Total	M											
	F											
	Sum											
Junior College	M											
	F											
University	M											
	F											

(6) (Middle School) [Graduate]: February 2021 graduates (including early graduates)

※ Publicly announced graduate = Graduate from education statistics [Student Change Status] + Early graduate = Graduate from education statistics [After Graduation Status]

(High School) [Enrollee to Higher Level]: February 2021 graduate

- Number of graduates must match the sum of the enrollee to a higher level (April), employed and others (unemployed & unknown, military service, special school training)

- Provided, the number of graduates include early graduates, but not the persons who completed

※ Publicly announced graduate = Graduate from education statistics [Student Change Status] + Early graduate

(7) (Middle School) [Enrollee to Higher Level]: Enter the students who registered with the concerned school, but make sure not to duplicate with high school registrants

(High School) [Enrollee to Higher Level]: Enter the students enrolled in colleges, but make sure not to duplicate the college registrants

- In cases of enrollment in colleges under ministries other than the Ministry of Education (example: transportation university, military academy, police academy, National Tax College, etc.), include in the university if the concerned college is a 4-year college, and include in the junior colleges if the concerned college is a 2~3 year college

① **[Ⓐ Enrollee in Korea]:** Enter by classifying into junior colleges and universities depending on the number of years

- Provided, professional schools and vocational schools are not considered enrollment in higher education, so they should be entered as 'unknown.' [Special School Training] is not considered an enrollee and has a separate section

- The number of enrollees should be based on the school first registered with, if accepted by several colleges

Type	Definition
Junior Colleges	<p>Number of students registered with 2~3 year colleges</p> <p>- (Technical College) Polytechnic colleges, (Specialty Colleges) Kukje University of Art, Baekseok Arts University, Jeonghwa Arts College, (Company College – Specialty Programs) Samsung Heavy Industries Engineering College, SPC Food Science College, DSME Institute of Technology, Hyundai Heavy Industries Institute of Technology, Posco Technical College</p>
Universities	<p>Number of students registered with 4 year colleges</p> <p>Teachers' College: number of students registered with the colleges established for the purpose of training teachers</p> <p>Industrial College: number of students registered with the colleges established for the purpose of research and study of science and arts or expert knowledge or skills required for industrial society (Chungwoon University, Howon University)</p> <p>Technical College: number of students registered with colleges established for the purpose of training experts equipped with both theories and practical abilities in the industrial fields (Jungseok University (undergraduate program))</p> <p>Air and Correspondence College: number of students registered with air and correspondence college and cyber universities — colleges established to give higher education opportunities to the people through remote education, such as information and communications media</p> <p>Various Kinds of Schools (College Program): educational institutions conducting education similar to that of regular school education pursuant to Article 59 (Various kinds of school) of the Higher Education Act (Korea National University of Arts, Korea Christian College)</p> <p>(Company University – University Program) Samsung Institute of Technology, KDB Finance University, LH Land & Housing University</p>

② **[B Overseas Enrollee]**: Enter students who registered with 4-year universities and junior colleges abroad, but do not duplicate with university registrants

- Provided, study abroad to institutions, such as a beauty academy or cooking school, should be included in unemployed and unknown

(8) (Middle School) [A General High School]: High school conducting general education on various areas

(9) (Middle School) [B Specialized High School]: High school providing alternative education focused on experience-oriented education, including vocational education or field practices for the purpose of developing talents in specific areas for the students with similar aptitude and characteristics

(10) (Middle School) [C Special Purpose High School]: High school focused on professional education on specific areas and classified into science high school, foreign language high school, international high school, arts high school, athletic high school and meister high school

- Science High School: train talents in science
- Foreign Language High and International High School: foster experts proficient in languages (foreign language high) and experts in international relations (international high)
- Arts High School and Athletic High School: train artists and athletes
- Meister High: operating tailored curriculum for professional vocational education (high school tailored to industry demand)

(11) (Middle School) [ⓉAutonomous High School]: High schools that improve the autonomy of the curriculum and operation of school affairs, and there are autonomous public high schools and autonomous private high schools

- Autonomous Private High School: private high schools operating a specialized curriculum according to the founding philosophy of the school

- Autonomous Public High School: public high schools intending to create well-rounded education by specializing and diversifying curriculum and program

(12) (Middle School) [ⓉOther Schools]: Attending foreign school, overseas educational institutions (recognized academic record), special schools, various kinds of schools, school for the gifted, etc.

- Persons enrolled in schools other than schools established based on the Elementary and Secondary Education Act or other recognized schools (including overseas educational institutions) should be excluded from the enrollee to a higher level and be entered as 'unemployed and unknown'

(13) (Middle & High School) [Employed]: Students with a fixed income from working more than 60 hours per 1 month, and includes a regular employee, person waiting to be appointed, non-regular employee and self-employed. Provided, persons who do not work and have no income are not considered employed and not entered as 'employed'

- Not Employed: income from property, such as interest, dividends and rent, etc., winnings from horse racing, etc., housework from his/her own home, attending classes at regular day-time educational institutions, unpaid volunteer work, illegal acts, such as robbery/theft/prostitution, etc.

(14) (Middle and High School) [Unemployed and Unknown]: Students who are not attending higher school or without a fixed job, or students whose status is unknown after graduation

(15) (High School) [Military Service]: Number of students serving in the military for compulsory military service

(16) (High School) [Special School Training]: enter the number of students enrolled in special school training

- Special School Training: Establishing and operating professional curriculum of 1 year or longer to provide career and vocational training to persons subjected to special education who graduated from high school curriculum

(17) (High School) [Acquired Technical License]: Survey of the number of people who acquired technical qualifications based on the attached table of the Enforcement Rule of the National Technical Qualifications Act, and if 1 person acquires 2 or more qualifications, the number of people who acquire the qualification should be 1

2-8. Enrollee and Graduate Status by Age (High School Only)

(1) [Enrollee]: Actual enrollees as of the first day of school in March 2021 (including additional admissions)

(2) [Graduate]: February 2021 graduates (including early graduates)

2-9. Study Abroad Status

ⒶBy Cause	①Non-Approved Study Abroad ②Immigration ③Accompanying Dispatch ④Approved Study Abroad								
	ⒸBy Period	Total			ⒸFirst Half (3.1~8.31)			ⒸSecond Half (9.1~2.28)	
ⒷBy Country	Sum	M	F	Sum	M	F	Sum	M	F
Total									
USA									
Unconfirmed									

- Study Abroad: Studying at overseas educational institution, research institution or training institution for 6 months or longer or researching and studying academics and technologies (Article 2(1) of the Regulation on Study Abroad)

(1) [ⒶBy Cause]: Select from Non-Approved Study Abroad, Immigration, Accompanying Dispatch and Approved Study Abroad

① Non-Approved Study Abroad: Study abroad not applicable under Article 5(1) and Article 15 of the Regulation on Study Abroad

② Immigration: When the entire family immigrated overseas

③ Accompanying Dispatch: Entire family members or part of the family members moved abroad for work dispatch

④ Approved Study Abroad: When approved by the superintendent of education or the director of National Institute of International Education pursuant to Articles 5~14 of the Regulation on Study Abroad

- Evaluated by the study abroad qualification evaluation committee under the lower-level educational administrative agency and approved by the superintendent of education

- Approved by the director of National Institute of International Education

- Applicable as ②immigration or ③accompanying dispatch depending on the reason when approved pursuant to the exemption of study abroad (Article 15 of the Regulation on Study Abroad)

※ Exemption of Study Abroad: Residing overseas with one or more person who is obligated to support, such as a mother or father. Provided, the reason for approving as study abroad is the overseas dispatch of a mother or father for official reasons or other similar cases (overseas dispatch of a parent who is a public official or corporate expatriate)

(2) [ⒷBy Country]: select one from USA, Japan, France, Germany, Spain, China, Canada, Australia, New Zealand, Russia, UK, Middle East, South America, Southeast Asia (Philippines, Thailand, Singapore, India, Indonesia, Malaysia, Vietnam, others), others and unconfirmed

(3) [ⒸBy Period]: Postponed or exempted period based on administrative processing

- Divide into the first half (March 1, 2020 ~ August 31, 2020) or second half (September 1, 2020 ~ February 28, 2021)

2-10. Returning Status

ⒶBy Cause	①Study Abroad ②Accompanying Dispatch ③Immigration
ⒷBy Length of Stay	①Less than 2 years ②2~3 years ③3~5 years ④More than 5 years

ⒸBy Country \ ⒹBy Period	Total			ⒹFirst Half (3.1~8.31)			ⒹSecond Half (9.1~2.28)		
	Sum	M	F	Sum	M	F	Sum	M	F
Total									
USA									
Others									

(1) [ⒶBy Cause]: Select one among study abroad (approved, non-approved), accompanying dispatch or immigration

(2) [ⒷBy Length of Stay]: Survey of the period of stay of study abroad and select one from less than 2 years, 2~3 years, 3~5 years and more than 5 years

(3) [ⒸBy Country]: Survey of the country of study abroad and select one from USA, Japan, France, Germany, Spain, China, Canada, Australia, New Zealand, Russia, UK, Middle East, South America, Southeast Asia (Philippines, Thailand, Singapore, India, Indonesia, Malaysia, Vietnam, others) and others

(4) [ⒹBy Period]: Re-enrollment or transfer period based on administrative processing
 - Divide into first half (March 1, 2020 ~ August 31, 2020) or second half (September 1, 2020 ~ February 28, 2021)

2-11. Multi-cultural Student Status

(1) [Children Born in Korea from Multi-cultural Families (A)]: Child(ren) born in Korea between one Korean parent and one foreign parent
 - Provide, excluding children whose parents are Korean, but through re-marriage, one parent is a foreigner

(2) [Children from Multi-cultural Families and Moved to Korea (B)]: Child(ren) born overseas between one Korean parent and one foreign parent, without regards to whether the foreign parent became a naturalized Korean citizen, and moved to Korea with his/her parents
 - Including children of a married immigrant person (foreigner who immigrated to Korea after marrying a Korean person) who moved to Korea after the married immigrant parent re-married a Korean
 - Include children born to two foreign parents but one parent re-married to a Korean

(3) [Children of a Foreign Family (C)]: Children whose parents are both foreigners and residing in Korea (Children of foreign workers, children of overseas Koreans, etc.)

- (4) [Country Classification]:** Enter the number of multicultural students by each country among Japan, China, China (Korean descent)*, Taiwan, Mongolia, Philippines, Vietnam, Thailand, Cambodia, Indonesia, Russia, Central Asia, Russia & Central Asia (Korean descent)*, Middle East, USA, Europe, Africa and others
- Ethnic Koreans should be entered as China (Korean descent)* and Russian Koreans should be entered as Russia & Central Asia (Korean descent)*
 - Central Asia: Uzbekistan, Kazakhstan, Kyrgyzstan, Tajikistan, Turkmenistan
 - Middle East: Qatar, Bahrain, Afghanistan, Iran, Iraq, Syria, Jordan, Saudi Arabia, Lebanon, Israel, Kuwait, Yemen, Oman, Somalia, Ethiopia, Sudan, Egypt, Libya
 - Others: countries other than the above

2-12. Foreign Student Status (High School Only)

- (1) [By Country]:** Enter the number of foreign students by each country among Asia, America, Europe, Oceania and Africa
- Asia: China, Japan, Mongolia, Vietnam, Indonesia, Malaysia, Thailand, Singapore, Philippines, Uzbekistan, Kazakhstan, India and others
 - America: USA, Canada, Mexico, Brazil and others
 - Europe: France, Germany, UK, Italy, Spain, Russia and others
 - Oceania: Australia, New Zealand and others
 - Africa





<https://kess.kedi.re.kr>

Center for Education Statistics
Korean Educational Development Institute(KEDI)

E-mail : service@kedi.re.kr
Address : (27873) 7, Gyohak-ro, Deoksan-eup, Jincheon-gun, Chungcheongbuk-do, Korea

Published in December 2021