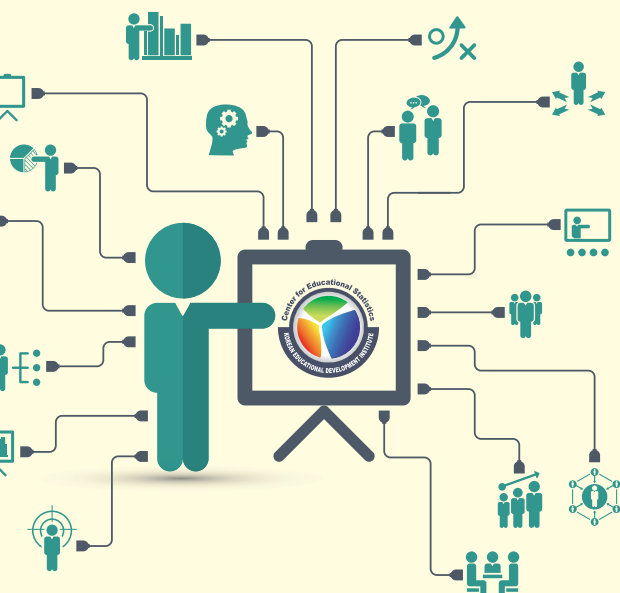


Center for Educational Statistics is a government-funded research institute under the Prime Minister's Office.

Center for Educational Statistics at Korean Educational Development Institute



Acts

Early Childhood Education Act (June 22, 2017, Act No.14602)

Elementary and Secondary Education Act (June 22, 2017, Act No.14603)

Higher Education Act (June 22, 2017, Act No.14600)

Lifelong Education Act (May 30, 2017, Act No.14160)

Statistics Acts (Dec 27, 2016, Act No.14467)

- Education Statistics Survey (designated statistics) : No. 334001 approved by Statistics Korea
- Employment Statistics Survey of Higher Education Graduates (general statistics) : No. 334003 approved by Statistics Korea
- Lifelong Education Statistics Survey (general statistics) : No. 334006 approved by Statistics Korea
- Personal Lifelong Learning Survey (general statistics) : No. 334009 approved by Statistics Korea

Agreement on OECD (12. Dec, 1996, Treaty No.1358)

I

Overview of Center for Educational Statistics

Goals

Producing and disseminating high-quality statistics covering comprehensive education areas

Producing and disseminating reliable education statistics by conducting statistical surveys on pre-primary, primary, secondary, and higher education, lifelong education, and employment status of higher education graduates.

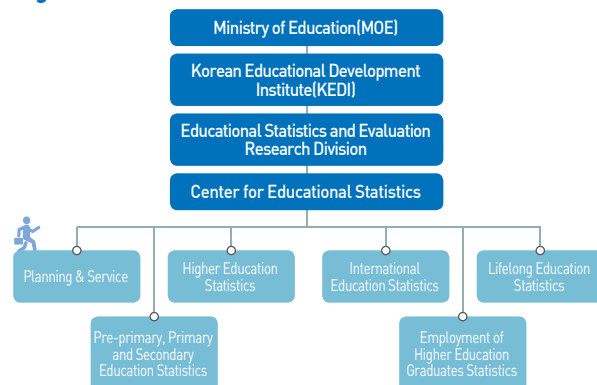
Supporting policy-making and academic work based on reliable educational statistics

Providing various analytical materials based on reliable educational statistics to promote scientific policy decision and research studies on education

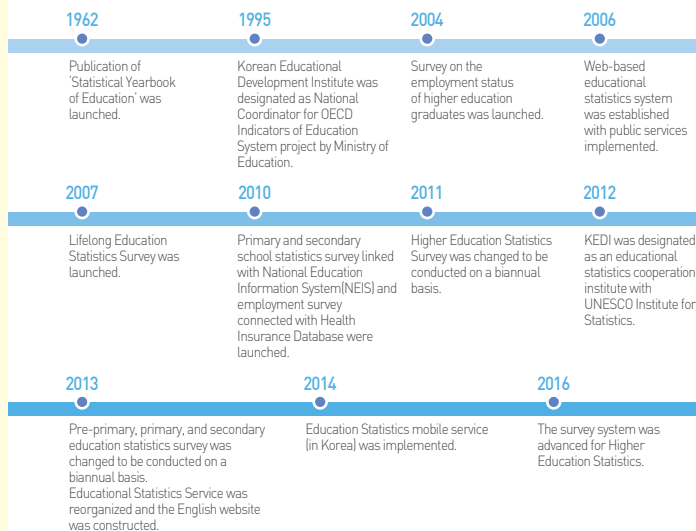
Building global partnership via international statistical projects

Promoting international cooperation as well as national competitiveness in terms of educational development by participating in global statistical projects and yielding internationally comparable data

Organization



History



II

Survey Items and System

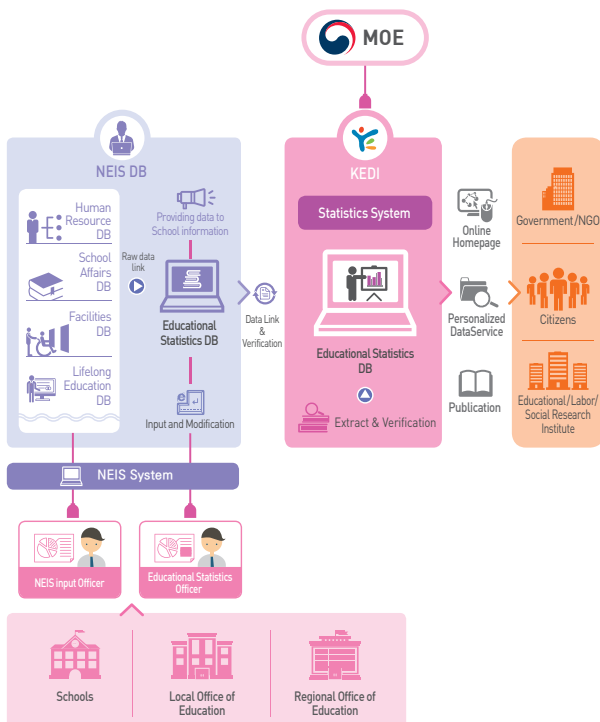


1 Pre-primary, Primary and Secondary Education Statistics

Overview

Purpose	- To provide nationwide statistical information on pre-primary, primary, and secondary education for empirical data-based research in addition to addressing realistic and effective policy implications.
Survey Subjects	- About 20,000 schools, 190 offices of education (as of 2017) *Schools: Kindergarten, Primary and Secondary School, Special School, etc. *Offices: Regional/local Offices of Education, etc.
Survey Items	- Schools : general conditions, teachers, students, staff, etc. - Offices : general conditions, members of educational administration, education budgets, etc.
Survey Date	- April 1 and October 1, on a biannual basis
Data Collection	- Utilizing source materials from National Education Information System(NEIS)

Survey System

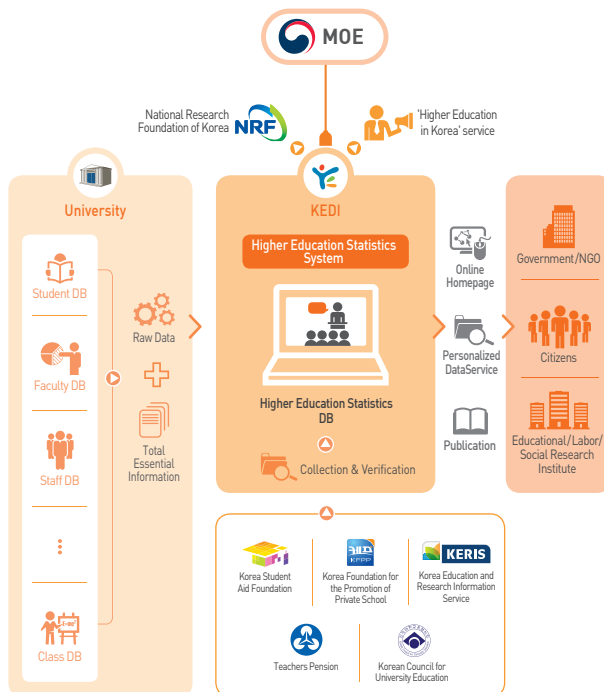


2 Higher Education Statistics

Overview

Purpose	- To provide nationwide statistical information on higher education for empirical data-based research in addition to addressing realistic and effective policy implications
Survey Subjects	- About 1,900 institutes of higher education including junior college, university, graduate school, etc. (as of 2017)
Survey Items	- General conditions, faculties, students, staff, facilities, courses, etc.
Survey Date	- April 1 and October 1, on a biannual basis
Data Collection	- Using the standardized database system of higher education institutes

Survey System



3

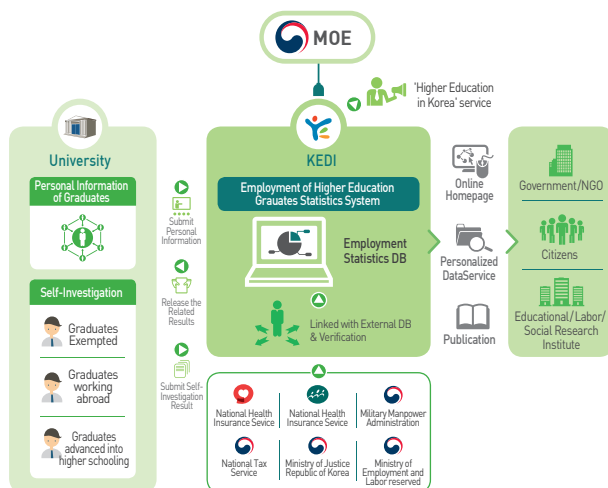
Statistics on Employment of Higher Education Graduates



Overview

Purpose	- To provide nationwide statistical information on the employment status of higher education graduates for empirical data-based research in addition to addressing realistic and effective policy implications
Survey Subjects	- Individuals who graduated from college in February of the last year or August of two years before - About 60 million graduates from 590 institutes such as University, University of Education, Industrial University, Junior College, Miscellaneous School (University and Junior College), Polytechnic College, and General Graduate School (as of 2017)
Survey Items	- Employment (people enrolled in health insurance through the work, working abroad, agri, forestry and fishery workers, individual creative workers, sole proprietors, and freelancers) - Advanced into higher schooling , Unable to work , Exempt , Enlisted , Unknown , Other
Survey Date	- December 31, on an annual basis
Data Collection	- Using the public databases and school survey

Survey System



Key Output Formulas

- $$\text{Employment rate}(\%) = \frac{\text{Employment}}{\text{Graduates} - [\text{advanced into Higher Schooling} + \text{Enlisted} + \text{Unable to Work} + \text{Exempt} + \text{Foreign Students}]} \times 100$$
- $$\text{Advancement into Higher Schooling Rate}(\%) = \frac{\text{Advanced into Higher Schooling}}{\text{Graduates}} \times 100$$

4

Lifelong Education Statistics

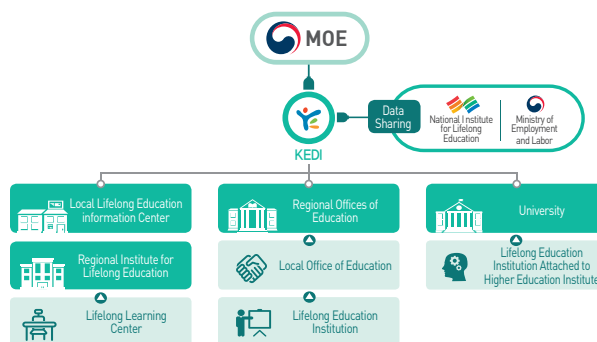


Lifelong Education Statistics Survey

Overview

Purpose	- To provide nationwide statistical information on lifelong education for empirical data-based research in addition to addressing realistic and effective policy implications
Survey Subjects	- About 4,200 institutions (as of 2017) - Lifelong Learning Centers, Cyber Lifelong Education Institutions, Lifelong Education Institutions for Knowledge & HRD, Lifelong Education Institutions attached to schools, companies, NGOs, Mass Media
Survey Items	- General conditions of institutions, programs and learners, instructors, staff, etc.
Survey Date	- May 1, on an annual basis
Data Collection	- Using the web-based survey system of Lifelong Education Statistics

Survey System



Personal Lifelong Learning Survey

Overview

Survey Subjects	- Korean adults from aged 25-79 years old nationwide - About 11,000 people(as of 2017)
Survey Items	- Participation in lifelong learning programs (formal, non-formal, or informal education), learning environment, learning competency, social participation and awareness, and background statistics.
Survey Date	- July 1, on an annual basis(past 1 year from July of the previous year to June of the survey year)
Data collection	- Face-to-face interview



Education Statistics Service

5 International Education Statistics

Overview

Purpose	- To promote international cooperation as well as national competitiveness in terms of educational development by participating in global statistical projects and yielding internationally comparable data
Cooperative Organizations	- International level: OECD Directorate of Education and Skills (INES programme), OECD INES NESLI network, OECD INES LSO network, UNESCO Institute for Statistics - National level: MOE, Statistics Korea, MOHW, KFPP, GEPS, KRIVET
Main Tasks	- Participation in the UOE Educational Statistics Survey and OECD's annual publication of "Education at a Glance: OECD Indicators" by designing a survey, and collecting, verifying, and submitting the data in compliance with the OECD standards

Survey Items

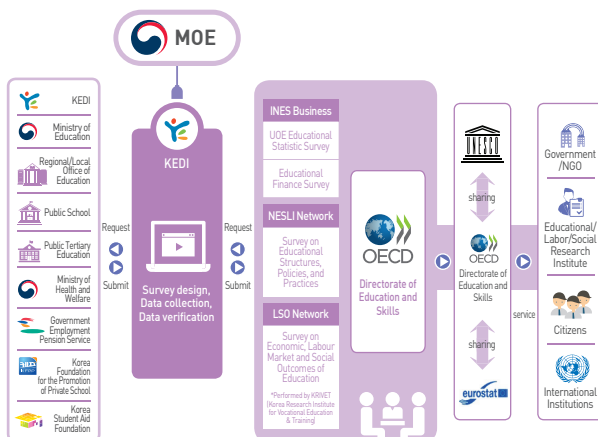
Major UOE Items	- Enrollments, entrants, graduates, and educational personnel of schools
INES Education Finance	- Central, regional, and local government expenditure - Household and other private entities' expenditure - Educational expenditure by type of expenses
NESLI*	- Organization of general education - Salaries and working hours of teachers
LSO	- Educational attainment - Social outcomes related to education, participation in the labor market, advantages from education and financial incentives for educational investment - Participation in adult learning programs

*INES : Indicators of Education System

*NESLI : INES Network for the Collection and Adjudication of System-Level Descriptive Information on Educational Structures, Policies and Practices

*LSO : INES Network on Data Collection and Development on Economic, Labour Market and Social Outcomes of Education

Survey System



Homepage : <http://kess.kedi.re.kr/eng/index>

- Provide the source materials of statistics publications such as Statistical Yearbook of Education, Standard Form Service arranged by the common requests of users, time series statistics, press release and statistical materials

Mobile Service (only available in Korean)

- Mobile application can be found in the App Store or Google Play Market by typing "education statistics" or "education statistics service" in the search box.

Publications



- 1 Statistical Yearbook of Education 2 Statistics Yearbook for Employment of Higher Education Graduates
3 Statistics of Lifelong Education 4 Korean Adult Lifelong Learning Survey 5 Education at a Glance: OECD Indicators(translated version) 6 Analysis of Education Statistics(Pre-primary, primary, and secondary school / Higher and Employment / Lifelong) 7 Brief Statistics on Korean Education

Customized Education Statistics Service

- **On-line Service :** Education Statistics provides customized services according to user requests through the homepage(<http://kess.kedi.re.kr>)
- **Call center Service(+82-43-530-9620, service@kedi.re.kr)**
 - Please use the resource request sheet available on- and off- line
 - User-customized education statistics call center, operated by professional staff

Supporting Education Research and Policies

- School/University Assessment
- Labor/manpower supply and demand policy
- Supporting local governments and associations
- Basic research data
- Improvement of university management

Contact Information

Address 7 Gyohak-ro, Deoksan-myeon, Jincheon-gun, Chungbuk, Korea
Tel 82-43-530-9620 Fax 82-43-530-9599 E-Mail service@kedi.re.kr
Published on May 31, 2017